



axis
RESIDENCES



ROBINSONS LAND
RESIDENTIAL DIVISION

We Are Home.



FEDERAL LAND

Federal Land Group

KEEPING YOU
IN MIND



axis RESIDENCES

Be at the Center of Everything

Feel the universe revolve around you at **Axis Residences**. Experience moving around the metro very quickly and coming home to a community with everything you need.

Axis Residences, a joint venture between **Robinsons Land Corporation** and **Federal Land, Inc.**, is a two-tower residential condominium development within the **Robinsons Cybergate Complex** in Pioneer district, **Mandaluyong**.

HLURB LTS # 029213

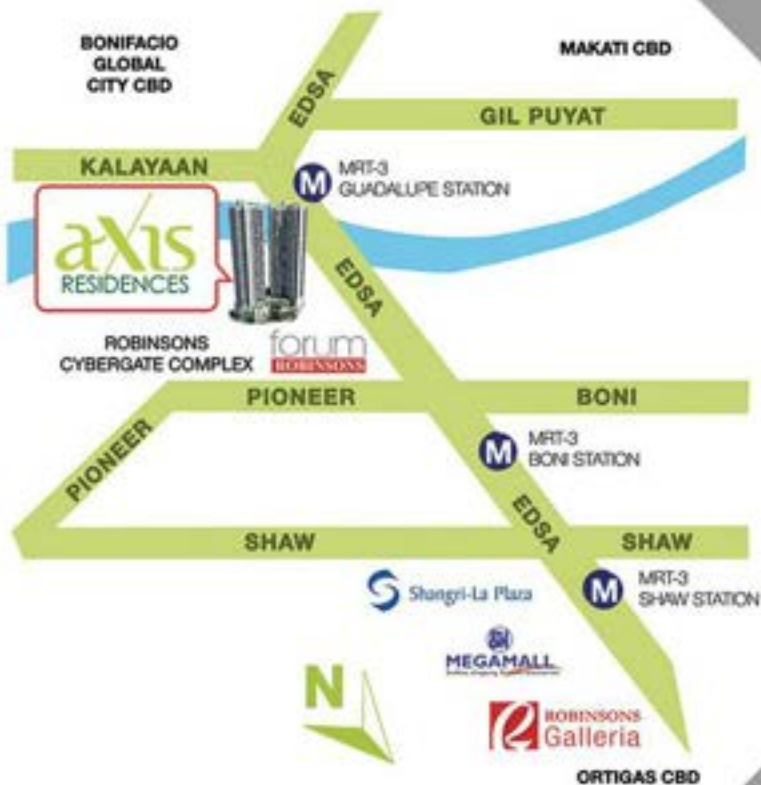


DISCLAIMER: All plans, specifications, and illustrations contained herein are for identification and reference only. While every care has been taken in preparation of this material, all details are subject to change without prior notice and do not constitute part of any offer or contract. The developer does not authorize the person to render any representation or warranty regarding this project. Sales agents are not authorized to make statements outside this material.



Nearby commercial areas:

- Forum Robinsons
- Robinsons Galleria
- EDSA Shangri-la
- GO Hotels



Nearby academic institutions:

- La Salle Greenhills
- Saint Pedro Poveda College
- St. Paul College, Pasig
- Lourdes School of Mandaluyong
- University of Asia and the Pacific



On the Radar

At Axis Residences, all you need is just on your radar.

Accelerate your dynamics. Optimize your lifestyle and beat the rush with Axis Residences' strategic location in between Manila's business districts and close to Manila's major highway.

Converge at the core. Enjoy a self-sustaining community at the Robinsons Cybergate Complex, a x-hectare mixed-use development, and home to 4 office buildings, 4 other residential condominiums, and a mall.

Calibrate your views. Zoom into the skyline view by taking advantage of Axis Residences' full-height windows and perfect spot within the Robinsons Cybergate Complex.



Site Development

Navigate the Coordinates

Land area:
9,742 sqm

Number of towers:
2

Number of residential units:
873 units in each tower

Number of floors per tower:
42

Theme / Architectural
Design

Axis Residences has a
modern architectural design.



ROBINSONS LAND
RESIDENTIAL DIVISION

We Are Home.

DISCLAIMER: All plans, specifications, and illustrations contained herein are for identification and reference only. While every care has been taken in preparation of this material, all details are subject to change without prior notice and do not constitute part of any offer or contract. The developer does not authorize the person to render any representation or warranty regarding this project. Sales agents are not authorized to make statements outside this material.



FEDERAL LAND
Member Group

KEEPING YOU
IN MIND



Building Facilities / Services:

- Lobby lounge
- Four (4) elevators for each building
 - CCTV at strategic locations
 - Individual mailboxes
 - Garbage room per floor
- Emergency back-up power supply
- Drying cages located at the roof deck
 - Podium parking



Project Designer

The birth of Casas+Architects all started with the partnership of two young architects, Jose Pedro C. Recio and Carmelo T. Casas. Both of them had their diversified practice in Hong Kong's top architectural firms. The two architects had their international stint from 1976 to 1988 with the major Hong Kong-based international firms before they decided to form their partnership known as RECIO+CASAS in October 1988 which was based in Hong Kong.

In 1990, a Philippine office was opened which spearheaded the firm's involvement as design consultant for the high-rise luxury residential development, The Pacific Plaza at Ayala Avenue, with Arch. Casas as the Principal Designer. Since then, the firm led by Jose Pedro Recio and Carmelo Casas had become the design consultant for many projects such as One and Two Lafayette Square, Kingswood Gardens, Salcedo Park, the Richmond Hotel, and the ABS/CBN Broadcasting Studio Complex. In 1996, another high-rise luxury residential development known as Pacific Plaza Towers in Fort Bonifacio gained prestige for the company. This brought Arch. Casas back to the Philippines to spearhead this landmark project which was completed in 2000. In 1997, the firm Recio+Casas was awarded the first prestigious title of the Firm of the Year Award by the Philippine Institute of Architects.

Arch. Casas earned his Bachelors degree in Architecture in the University of Santo Tomas in 1976 and passed the National Board Examination in 1978, placing 7th in the Top 10.





Unit Options

Studio (Deluxe Unit)

- Approx. 23.76 to 27.80 sqm

Studio Combined (Executive Unit)

- Approx. 50.04 sqm

1 Bedroom

- Approx. 47.30 to 48.78 sqm

2 Bedroom

- Approx. 50.94 to 75.24 sqm

3 Bedroom

- Approx. 97.55 sqm

DISCLAIMER: All plans, specifications, and illustrations contained herein are for identification and reference only. While every care has been taken in preparation of this material, all details are subject to change without prior notice and do not constitute part of any offer or contract. The developer does not authorize the person to render any representation or warranty regarding this project. Sales agents are not authorized to make statements outside this material.



ROBINSONS LAND
RESIDENTIAL DIVISION

We Are Home.



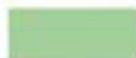
KEEPING YOU
IN MIND



LEGEND:



STUDIO WITH BALCONY



2 BEDROOM WITH BALCONY



Typical Floor Plan

Tower A
5th Floor



LEGEND:

- STUDIO COMBINED
- STUDIO

Typical Floor Plan

Tower A
6th to 33rd





LEGEND:

- 2 BEDROOM
- STUDIO

Typical Floor Plan

Tower A
34th to 41st





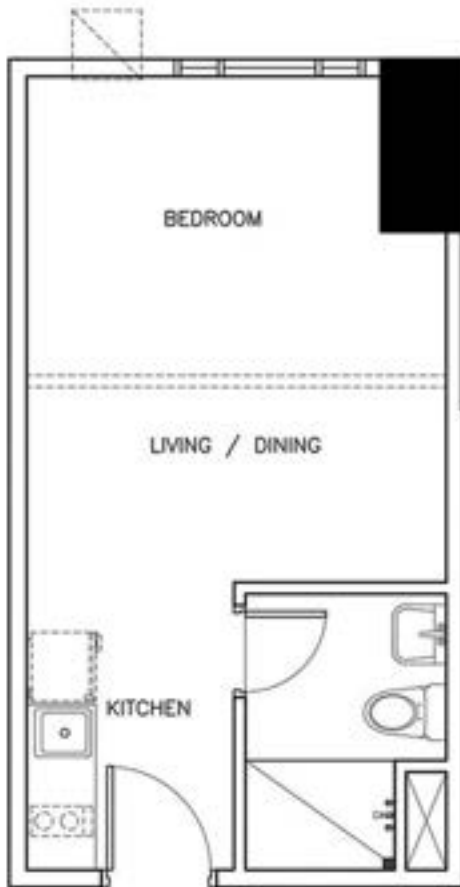
LEGEND:

- 1 - BEDROOM
- 2 - BEDROOM
- 3 - BEDROOM

Typical Floor Plan

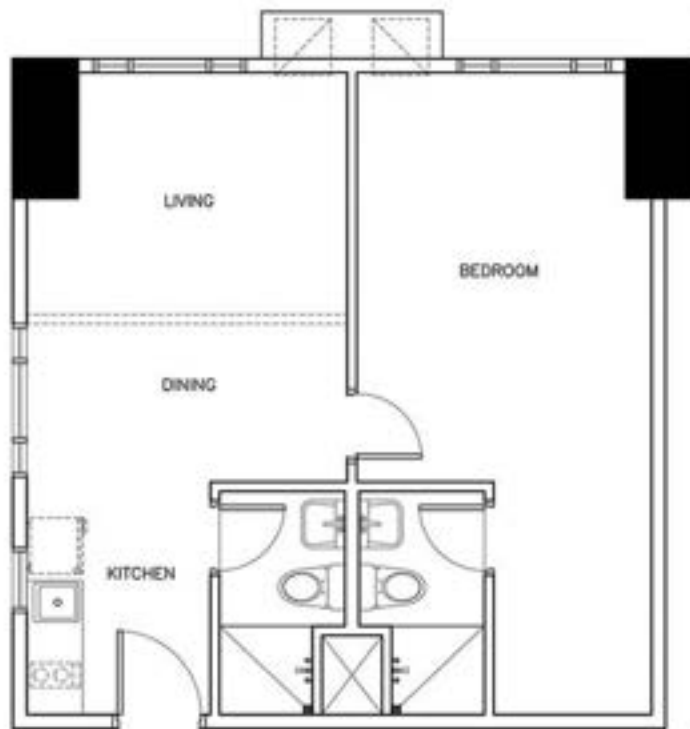
Tower A
42nd





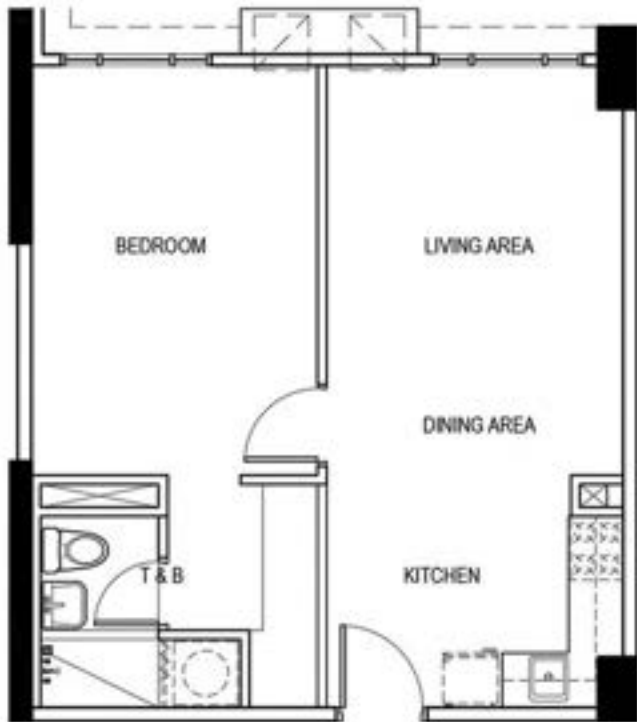
Unitized Floor Plan

Tower A
 Standard Finish
 Studio (Deluxe Unit)
 Approx. 23.76 sqm



Unitized Floor Plan

Tower A
 Standard Finish
 Studio Combined (Executive Unit)
 Approx. 50.04 sqm



Unitized Floor Plan

Tower A
 Standard Finish
 1 Bedroom unit
 Approx. 47.30 sqm



Unitized Floor Plan

Tower A
 Standard Finish
 2 Bedroom unit
 Approx. 50.94 sqm





Unit Features

- Entrance panel door with viewer
- Individual meter for water and electricity
- Emergency back-up power supply
 - Provision for range hood
 - Telephone and cable ready
- Provision for water heater at shower area
 - Complete toilet and bath fixture
- Tall windows in bedroom area (2.1 m)
 - Exhaust system



ROBINSONS LAND
RESIDENTIAL DIVISION

We Are Home.

DISCLAIMER: All plans, specifications, and illustrations contained herein are for identification and reference only. While every care has been taken in preparation of this material, all details are subject to change without prior notice and do not constitute part of any offer or contract. The developer does not authorize the person to render any representation or warranty regarding this project. Sales agents are not authorized to make statements outside this material.



FEDERAL LAND
RESIDENTIAL GROUP

KEEPING YOU
IN MIND

PARTICULARS	BEDROOMS	LIVING/DINING	KITCHEN	MASTER/COMMON T&B
FLOOR	Laminated Wood	Homogeneous Tiles		Ceramic Tiles
WALL	Plaster Wall with Paint Finish			Combination of Ceramic Tiles and Plaster Wall with Paint Finish
CEILING	Painted Soffit		Moisture-resistant Gypsum Board in Paint Finish	
OTHER DELIVERABLES	Bedroom Closet	N/A	<ul style="list-style-type: none"> Overhead and Base Cabinets and Sink Granite Countertop 	N/A

Unit Deliverables



Amenities

Life can be sprightly and calming at **Axis Residences**. Enjoy these amenities:

- Adult Lap Pool with Pool deck
 - Kiddie Pool
- Function Rooms
- Fitness Center
- Children's Playground
- Multi-purpose Covered Court
 - Pavilion
- Landscaped Garden
 - Game Room



ROBINSONS LAND
RESIDENTIAL DIVISION

We Are Home.

DISCLAIMER: All plans, specifications, and illustrations contained herein are for identification and reference only. While every care has been taken in preparation of this material, all details are subject to change without prior notice and do not constitute part of any offer or contract. The developer does not authorize the person to render any representation or warranty regarding this project. Sales agents are not authorized to make statements outside this material.





Amenities

- Kiddie Pool

DISCLAIMER: All plans, specifications, and illustrations contained herein are for identification and reference only. While every care has been taken in preparation of this material, all details are subject to change without prior notice and do not constitute part of any offer or contract. The developer does not authorize the person to render any representation or warranty regarding this project. Sales agents are not authorized to make statements outside this material.



ROBINSONS LAND
RESIDENTIAL DIVISION

We Are Home.



Amenities

- Function Room



DISCLAIMER: All plans, specifications, and illustrations contained herein are for identification and reference only. While every care has been taken in preparation of this material, all details are subject to change without prior notice and do not constitute part of any offer or contract. The developer does not authorize the person to render any representation or warranty regarding this project. Sales agents are not authorized to make statements outside this material.



ROBINSONS LAND
RESIDENTIAL DIVISION

We Are Home.





**ROBINSONS LAND
CORPORATION**

FOR DREAMS OUR FOUNDATION

Robinsons Land Corporation

Axis Residences is a project of Robinsons Land Corporation under its Robinsons Communities brand.

Robinsons Land Corporation is one of the Philippines' reputable real estate developers. It is a company of JG Summit Holdings, Inc., one of the largest conglomerates in the Philippines with interests in manufacturing, airline, real estate, banking, and petrochemicals. Robinsons Land has been a stable developer with businesses in malls, hotels, office buildings, horizontal housing, and residential condominium developments. The company has been awarded by leading international magazine Euromoney for being the Overall Best Managed Company in the Philippines for 2013 and 2014 consecutively. This citation is given to companies that displayed impressive execution of management accessibility, accounting transparency and corporate governance procedures.

axis
RESIDENCES



ROBINSONS LAND
RESIDENTIAL DIVISION

We Are Home.

DISCLAIMER: All plans, specifications, and illustrations contained herein are for identification and reference only. While every care has been taken in preparation of this material, all details are subject to change without prior notice and do not constitute part of any offer or contract. The developer does not authorize the person to render any representation or warranty regarding this project. Sales agents are not authorized to make statements outside this material.

