



ARUgA

BY ROCKWELL

RESORT AND RESIDENCES

MACTAN - CEBU



ARU<sup>g</sup>A

BY ROCKWELL

RESORT AND RESIDENCES

MACTAN - CEBU




# My kind of *Place*

A beachfront hotel fused with exquisitely designed residences. This 5-hectare sanctuary is nothing less than Rockwell's boldest move yet.

Lined along the serene side of the island, Aruga Resort and Residences - Mactan is an innovative residential concept that mixes the perks of resort relaxation with Rockwell's signature community living.

With only about 276 units, and boasting of a 300-meter beach front, you can have your share in this exclusive paradise reserved for the country's discerning elite.

Reside and retreat in its unique, tropical bliss.







For future  
development

Artist's Illustration





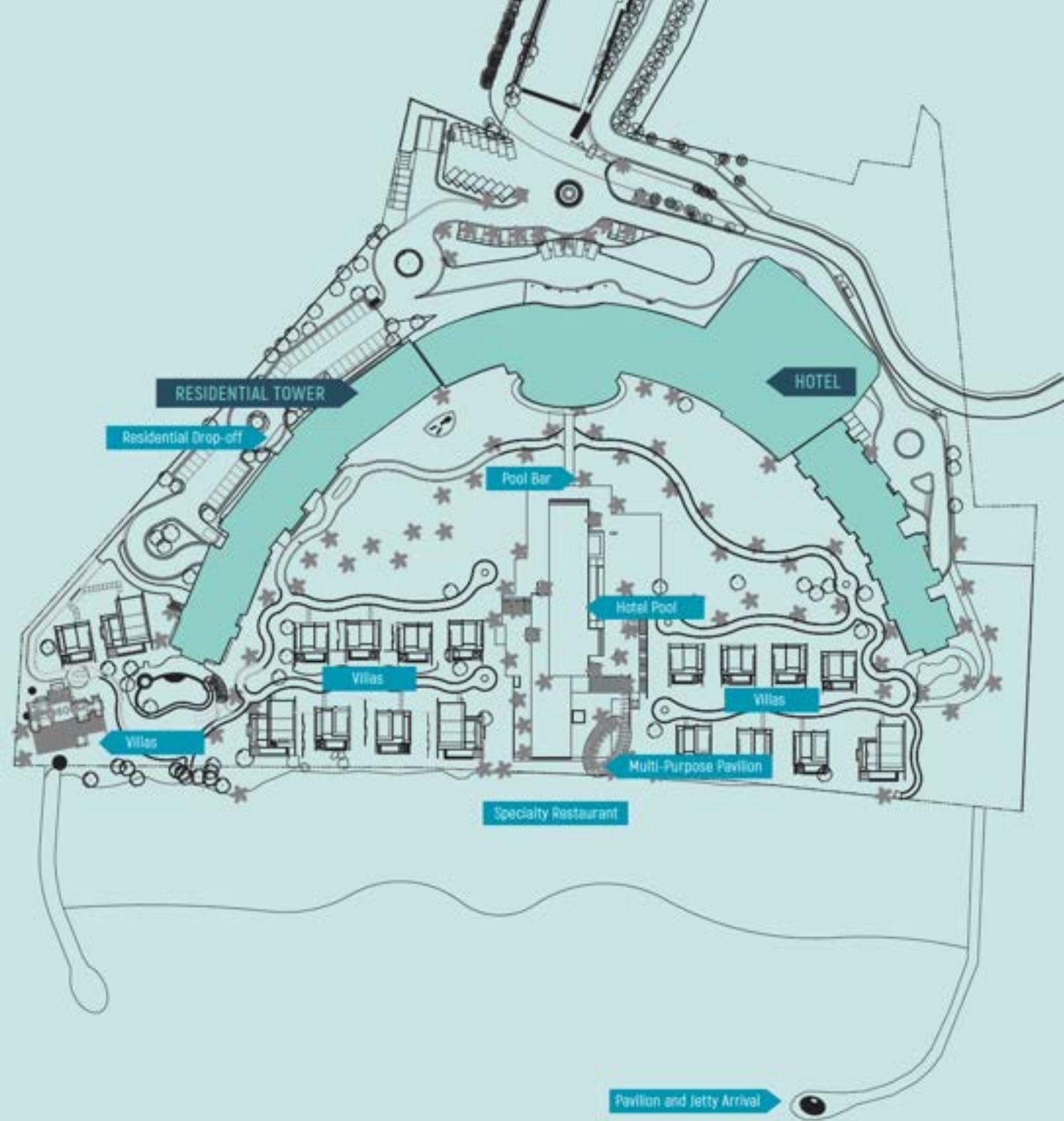


# My kind of *Neighborhood*

A private escape turned into a luxurious piece of real estate, Aruga Resort and Residences - Mactan is conveniently located along Mactan's sophisticated string of hotels and leisure establishments.

Complementing the relaxing atmosphere by the beach, the property's open areas are adorned by manicured gardens, keeping the area cool and energizing.

The hotel and residential areas are seamlessly integrated, bringing the best experience for guests and homeowners alike.







Artist's Illustration



# My kind of *Sun*

Wake up to sun-kissed mornings.

Stroll along the shore,  
sand cushioning your every step  
and the water tickling your toes.  
With 300 meters of private shores,  
you are enveloped in privacy.

If the sound of the waves  
won't drown your worries,  
then a dip into the blue  
would definitely fill you  
with tranquility.

It's a much-deserved retreat -  
your beachfront refuge awaits.







Artist's Illustration



# My kind of *Leisure*

Immerse yourself in peace.  
Drift into your personal realm  
of relaxation as you take a dip  
in the pool, accompanied by  
a picturesque view from  
every angle.

Leisure is taken up a notch in our  
facilities. Make time for your  
physical wellness at the private  
gym, complete with the latest  
in fitness equipment. Or make  
unforgettable memories at our  
fully serviced function rooms.









# My kind of *Lunch*

Explore the taste of Cebu -  
its seas, culture, and  
cuisine - all while taking in  
a spectacular view.

Let your taste buds forage  
through a diverse selection  
of taste and texture. Give in  
to the relaxing ambiance as you  
partake of your well-deserved  
Island Indulgence at  
the Floating Dining Hall.



# 1-Bedroom Unit



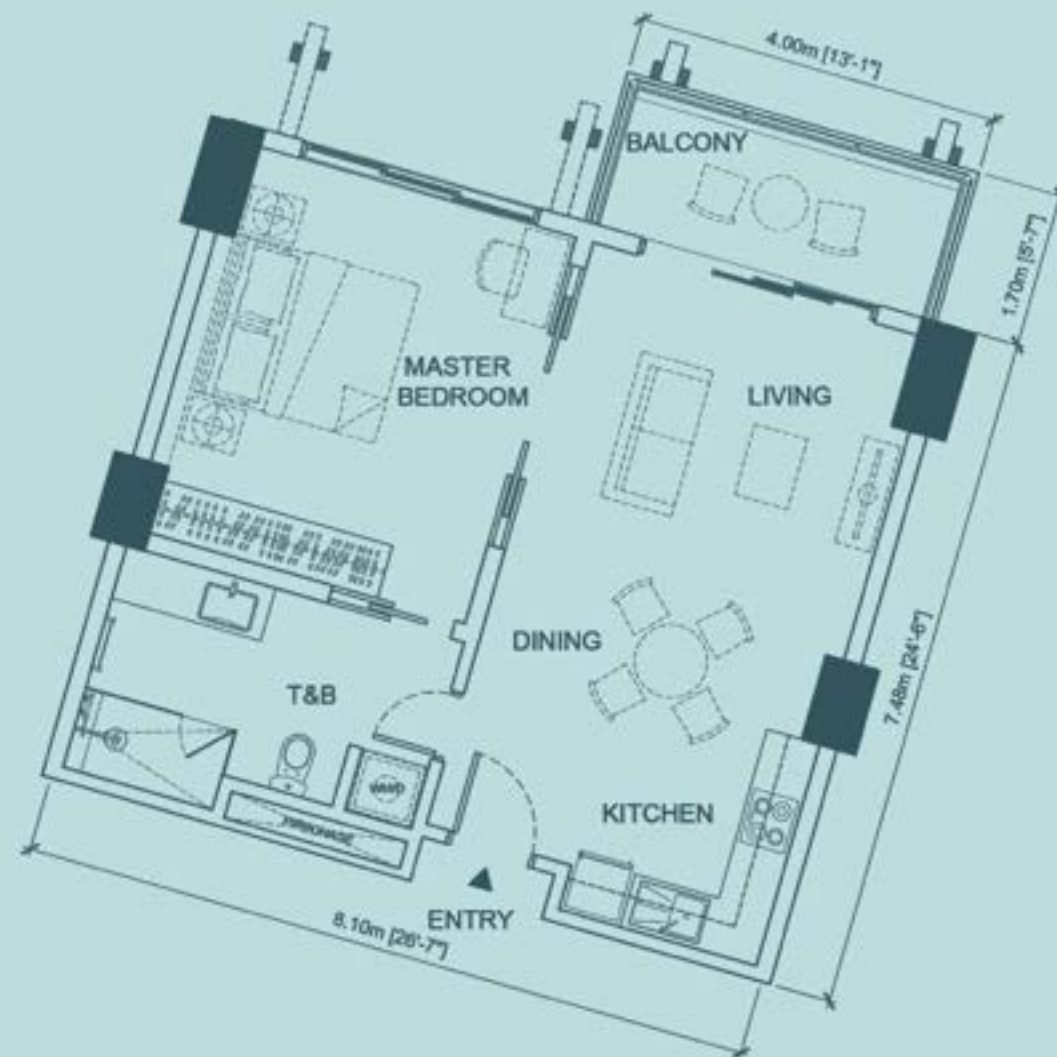
## Unit H

### Area:

|                       |       |
|-----------------------|-------|
| Living/Dining/Kitchen | 30 sm |
| Master's Bedroom      | 19 sm |
| T & B                 | 11 sm |
| Balcony               | 7 sm  |

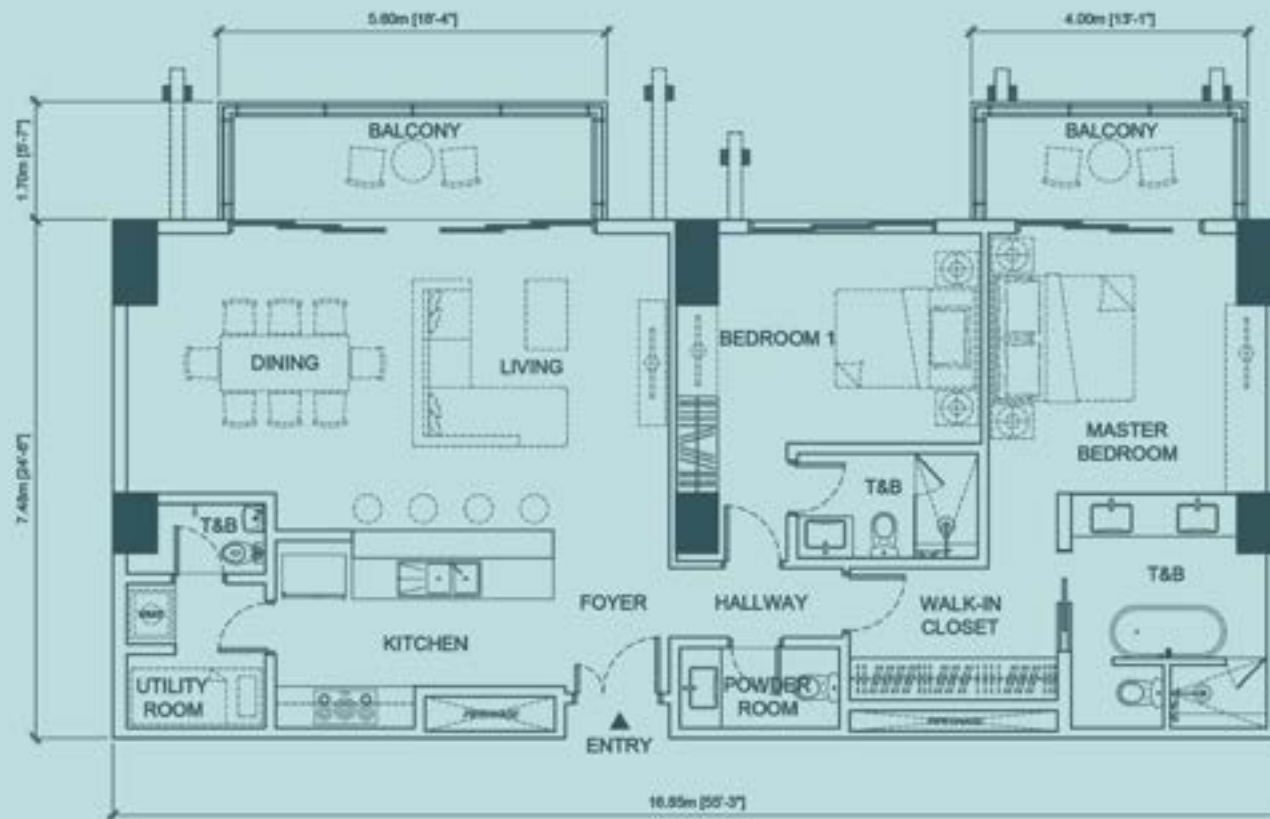
TOTAL AREA : 67 sm

LEVELS : 2<sup>nd</sup> - 3<sup>rd</sup>





## 2-Bedroom Unit



### Unit D

#### Area:

|                        |       |
|------------------------|-------|
| Foyer                  | 4 sm  |
| Living/Dining          | 35 sm |
| Kitchen                | 12 sm |
| Hallway                | 3 sm  |
| Master's Bedroom       | 17 sm |
| Walk-In Closet         | 9 sm  |
| Master's T & B         | 11 sm |
| Master Bedroom Balcony | 7 sm  |
| Bedroom 1              | 18 sm |
| Bedroom 1 T & B        | 5 sm  |
| Maid's Room            | 5 sm  |
| Maid's T & B           | 3 sm  |
| Balcony                | 10 sm |

TOTAL AREA : 142 sm

LEVELS : 12<sup>th</sup> - 17<sup>th</sup>



# 3-Bedroom Unit



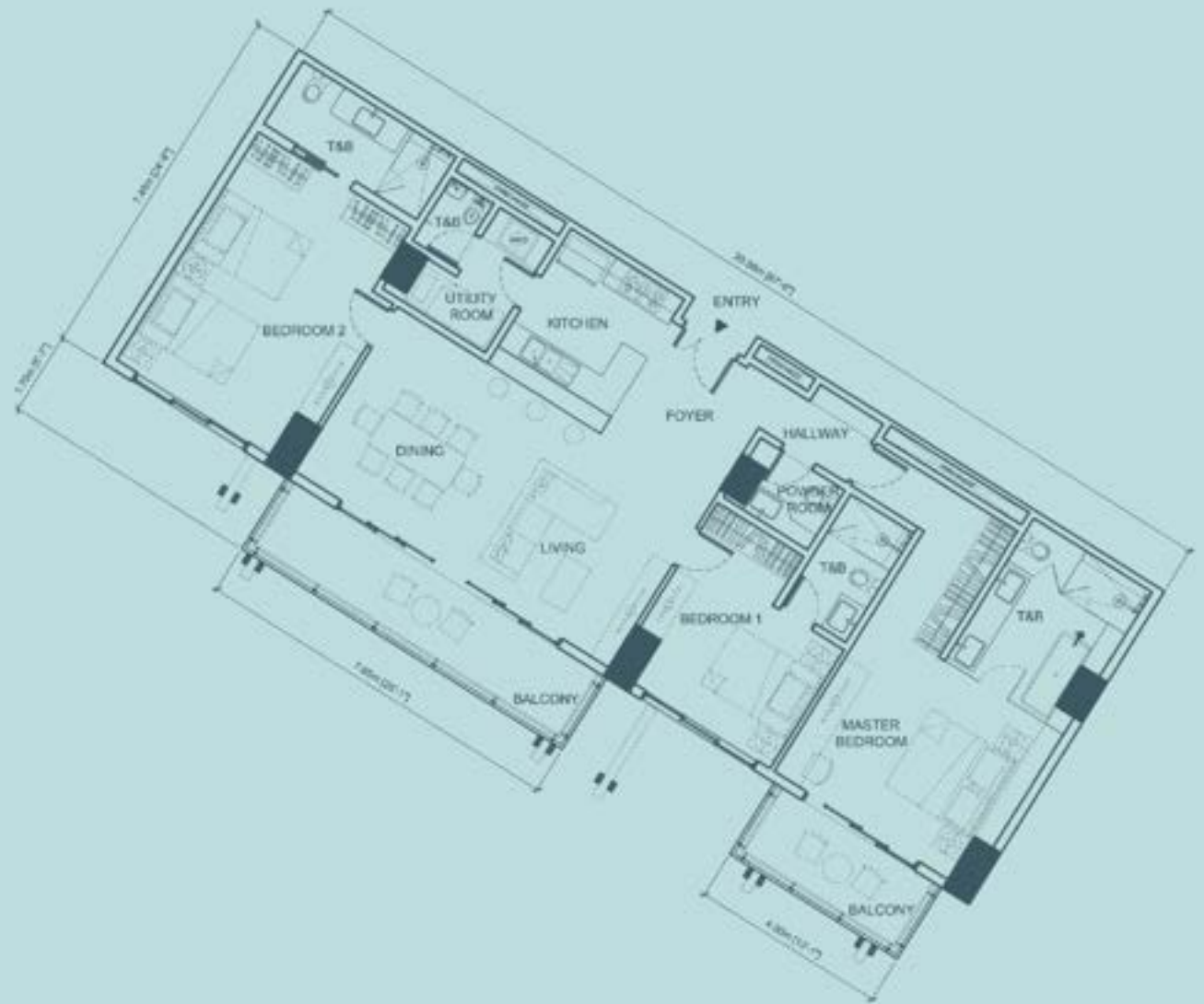
## Unit J

### Area:

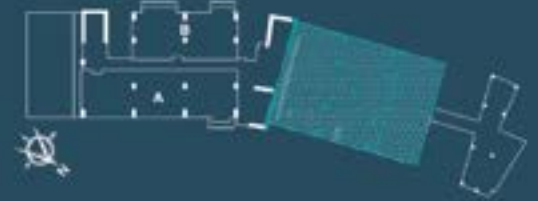
|                        |       |
|------------------------|-------|
| Foyer                  | 9 sm  |
| Living / Dining        | 30 sm |
| Kitchen                | 9 sm  |
| Hallway                | 3 sm  |
| Master Bedroom         | 28 sm |
| Master - T & B         | 11 sm |
| Master Bedroom Balcony | 7 sm  |
| Bedroom 1              | 15 sm |
| Bedroom 1 - T & B      | 5 sm  |
| Bedroom 2              | 24 sm |
| Bedroom 2 - T & B      | 7 sm  |
| Utility Room           | 7 sm  |
| Utility - T & B        | 2 sm  |
| Powder Room            | 3 sm  |
| Balcony                | 13 sm |

TOTAL AREA : 173 sm

LEVELS : 12<sup>th</sup> - 17<sup>th</sup>



# 4-Bedroom Unit



## Unit C

### Area:

|                   |       |
|-------------------|-------|
| Foyer             | 26 sm |
| Living/Dining     | 58 sm |
| Kitchen           | 21 sm |
| Master Bedroom    | 37 sm |
| Walk-in Closet    | 6 sm  |
| Master - T & B    | 14 sm |
| Bedroom 1         | 25 sm |
| Bedroom 1 - T & B | 6 sm  |
| Bedroom 2         | 24 sm |
| Bedroom 2 - T & B | 6 sm  |
| Bedroom 3         | 24 sm |
| Bedroom 3 - T & B | 6 sm  |
| Powder Room       | 5 sm  |
| Utility Room      | 7 sm  |
| Utility - T & B   | 2 sm  |
| Storage Pantry    | 5 sm  |
| Terrace (Covered) | 20 sm |

TOTAL AREA : 292 sm

LEVELS : 22<sup>nd</sup>







Artist's Illustration









## Unit Finishes

### LIVING & DINING AREAS

#### Floor

- Porcelain Tiles

#### Wall

- Paint with wooden base board

### ALL BEDROOMS

#### Floor

- Porcelain Tiles

#### Wall

- Paint with wooden base board

#### Closets

- Laminated closet doors with white interiors

### KITCHEN

#### Floor

- Porcelain Tiles

#### Wall

- Paint

#### Cabinetry

- Laminated Finish

#### Countertop

- Quartz Countertop

#### Others

- 1BR and 2BR Units (99-101sqm):  
Single-tub sink with gooseneck faucet
- 2BR, 3BR, and 4BR Units:  
Double-tub sink with gooseneck faucet

### TOILET & BATH

#### Single bowl sink with single-lever basin

mixer (3-hole basin mixer for Master T&B)

#### Floor

- Porcelain Tiles

#### Wall

- Full-height Porcelain Tiles
- Accent Mosaic Tiles for Shower Area

#### Countertop

- Natural Stone or approved equivalent

#### Mirror

- Included

#### Plumbing Fixtures & Fittings

- Duravit under-counter lavatory, or approved equal
- Gessi mixer, or approved equal
- Gessi exposed bath and shower mixer, or approved equal
- Gessi exposed rainshower and hand shower, or approved equal
- Duravit Water Closet, or approved equal

### WINDOWS

#### Living, Dining & Bedrooms

- 2400mm high windows with 100mm upstand wall

## Building Features

- Four high-speed elevators: 2 Passenger and 2 Service Lifts
- Automatic fire alarm, fire detection and sprinkler systems
- 100% standby emergency power
- Security system with electronic access control
- Closed circuit TV monitoring
- Basement parking equipped with ventilation system
- Exclusive drop-off bay
- Pre-assigned parking spaces for 2BR-4BR units





Artist's Illustration

# PROJECT TEAM

---

## CONSULTANTS & ARCHITECTS

Architect: Gallego Architects

Interior Design: Guillermo Valdez Design / Erfe & Associates

Structural Design: Sy<sup>2</sup> + Associates, Inc.

Building Service Design: Mellor Engineering Partners (MEP Philippines)

Quantity Surveyor: Arcadis Philippines, Inc.

Facade Consultant: ALT Cladding, Inc.

Wind Engineering Consultant: Windtech Consultants Pte. Ltd.

Traffic Consultant: SMDI Consultants, Inc.

Civil Works Consultants: AMH Philippines, Inc.

Coastal Engineer: AMH Philippines, Inc.

Feng Shui: Dr. Andy Tan

Acoustic Design Consultant: ihD Philippines Ltd, Inc.



ARU <sup>g</sup>A  
BY ROCKWELL  
RESORT AND RESIDENCES  
MACTAN - CEBU

[www.arugaresortandresidences.com/mactan](http://www.arugaresortandresidences.com/mactan)  
(0917) 155 ROCK  
Cebu: (032) 417-3888

© Feb 2020

A property developed by



HLURB LS No. 033646  
HLURB CVR AA-2018/09-528  
Completion Date: July 31, 2024

5097 Punta Engaño, Lapu-Lapu City, Mactan Island, Cebu