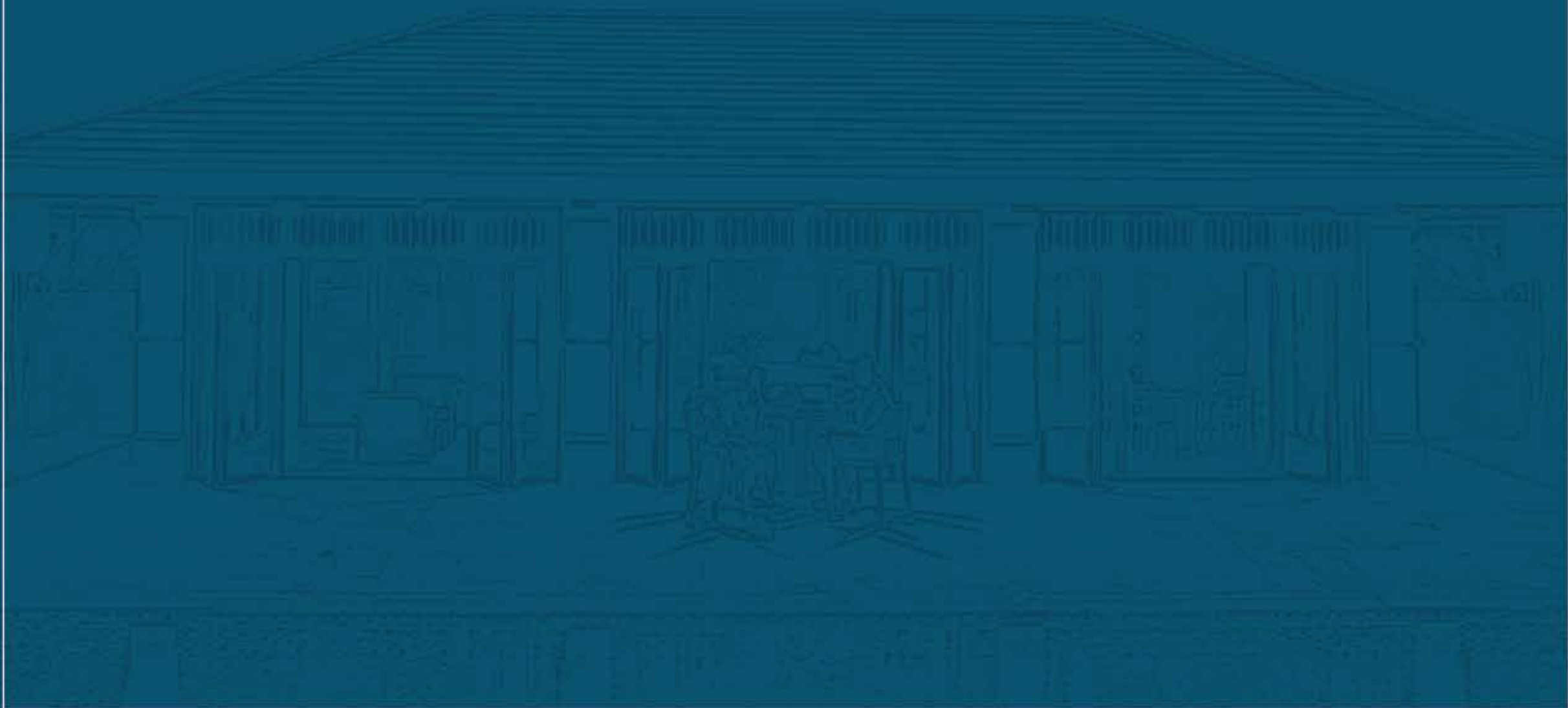


32 SANSON  
by ROCKWELL





NO PLACE LIKE HOME,  
NO PLACE LIKE

32 SANSON  
by ROCKWELL

## THE ROCKWELL STORY

Rockwell Land transformed a barren land into a masterplanned community that elevated the brand to new heights. The uniquely elegant lifestyle that is offered soon made Rockwell the gold standard for beyond ordinary living. With a plethora of masterpieces under its belt, Rockwell continues to innovate, reaching higher and stretching further. Today, Rockwell expands to new horizons to continue its legacy of success.

It was only natural that its next expansion would be at the Queen City of the South. Rockwell brings its formula for success to the island of Cebu, applying its expertise to create a masterpiece that is both practically functional and distinctly beautiful. 32 Sanson is a widespaced community developed to embody Cebu's natural splendor and serenity. Its sprawling gardens and luscious greens make for a peaceful and relaxing environment in the middle of a bustling city.





## YOUR ROCKWELL IN CEBU

Rockwell takes condo living to new heights with its first community in the Queen City of the South. 32 Sanson by Rockwell harmoniously balances the convenience of living in the city together with the luxury of space and lush greenery. Come home to peace and tranquility, leaving the stresses of the city behind.



\*Actual Photo



## NO PLACE LIKE HOME, NO PLACE LIKE 32 SANSON

With 32 Sanson's ideal location, conveniently near prominent schools and business establishments, you never have to worry about being far from it all. At a sprawling 3.2 hectare property, 5 carefully designed towers catered to the lifestyle you deserve. With 70% open space, enjoy living in a gated community with ample space for you and your loved ones.



32 Sanson's 5 residential towers are all meticulously designed to meet your every need. The first three towers, Raffia, Gmelina, and Buri, are currently being enjoyed by the growing community. The fourth tower, Solihiya, takes comfort to greater heights with a more diverse set of living spaces which you can soon call your own home.



\*Artist's Illustration





A composite image featuring a modern, multi-story apartment building on the left with a well-maintained garden and a winding path. On the right, a red playhouse with a yellow slide is shown, with two young girls sitting on the slide and interacting. The sky is blue with scattered clouds.

COME HOME FEELING RELAXED  
AND AT EASE WITH 32 SANSON'S  
TRANQUIL COMMUNITY.

\*Actual Photo



Create precious memories with your loved ones  
that you will cherish for years to come  
in venues suitable for that perfect gathering.



\*Actual Photo



A photograph of a modern apartment complex. In the foreground, there is a swimming pool with a wooden deck. Several lounge chairs with green and brown cushions are arranged on the deck, each with a large yellow umbrella. To the left, there is a building with large glass windows. In the background, there are lush green trees and a multi-story apartment building with balconies under a clear blue sky.

WHERE THE SUNSHINE AND  
COMMUNITY IS EXPERIENCED BOTH  
INSIDE AND OUTSIDE YOUR UNIT







A modern resort building with a swimming pool and lounge area. The building features a dark, textured roof and large glass windows. In the foreground, there is a swimming pool with blue water and a curved edge. Several lounge chairs are arranged around the pool, some with blue cushions and others with white cushions. Large blue umbrellas provide shade. The scene is set against a backdrop of palm trees and lush greenery under a bright sky.


SOON, YOU CAN COME HOME TO  
SERENITY AT YOUR DOORSTEP, WHERE  
THE HEART OF THE AMENITIES AWAITS







\*Artist's Illustration



Mark your marvelous milestones with your loved ones in your cozy clubhouse.





Stay healthy and live an active lifestyle  
in your state-of-the-art gym.



## THE SOLIHIYA

Look forward to the future of 32 Sanson with its latest residential tower, Solihiya.

At only 8 residential floors and 120 units, explore more opportunities with unit types ranging from studios to 4-bedroom.

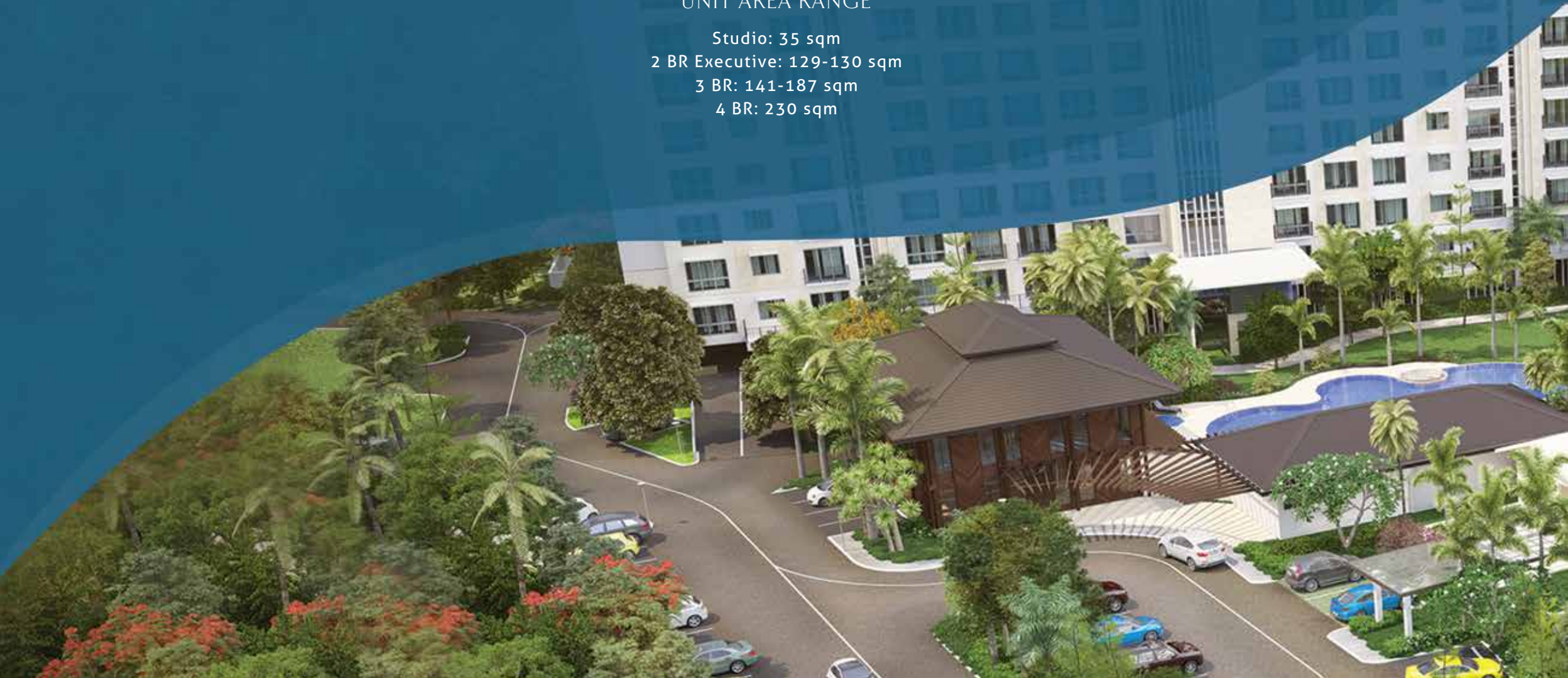
### UNIT AREA RANGE

Studio: 35 sqm

2 BR Executive: 129-130 sqm

3 BR: 141-187 sqm

4 BR: 230 sqm









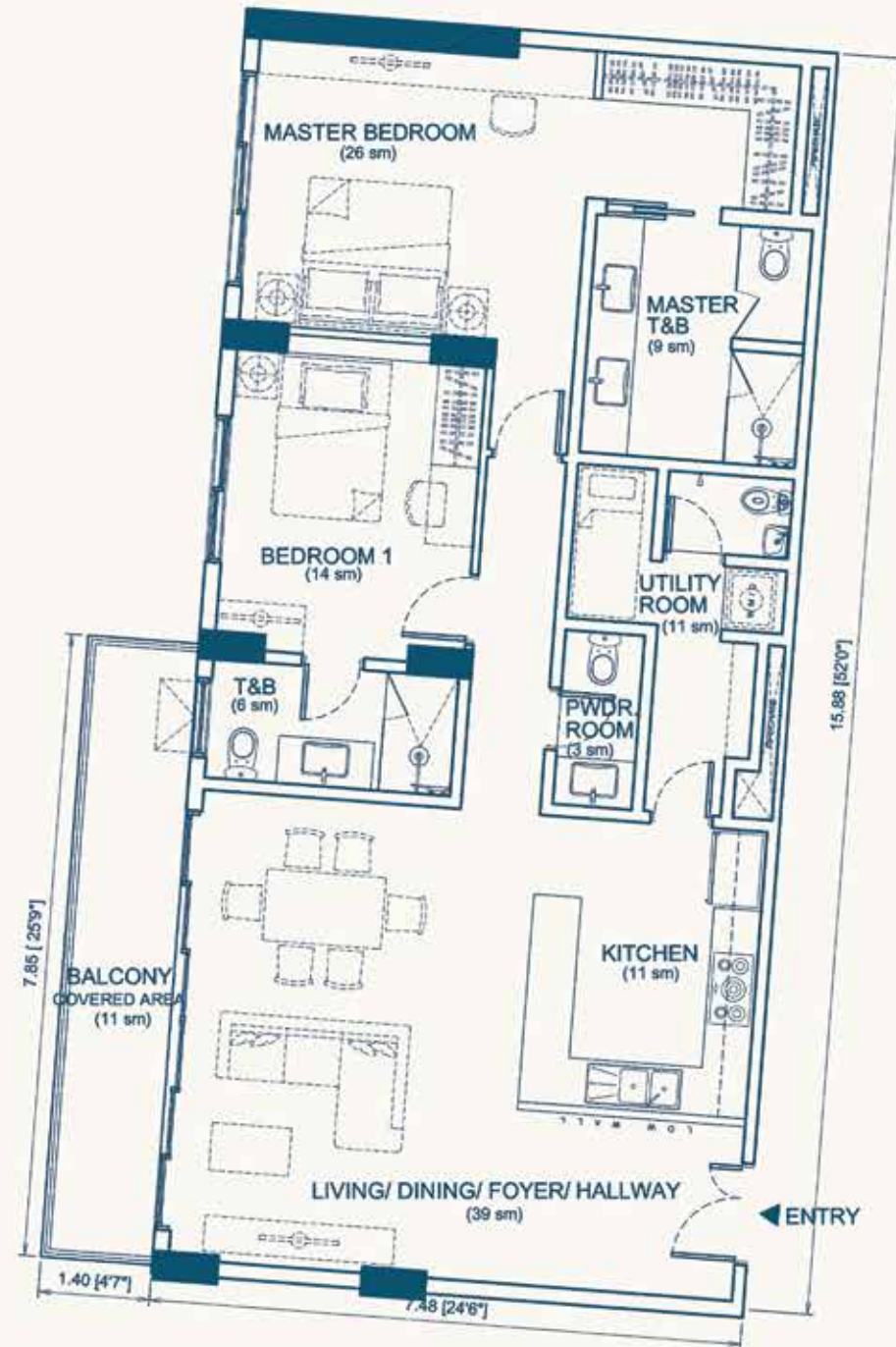
\*Artist's Illustration



2BR Living and Dining Area

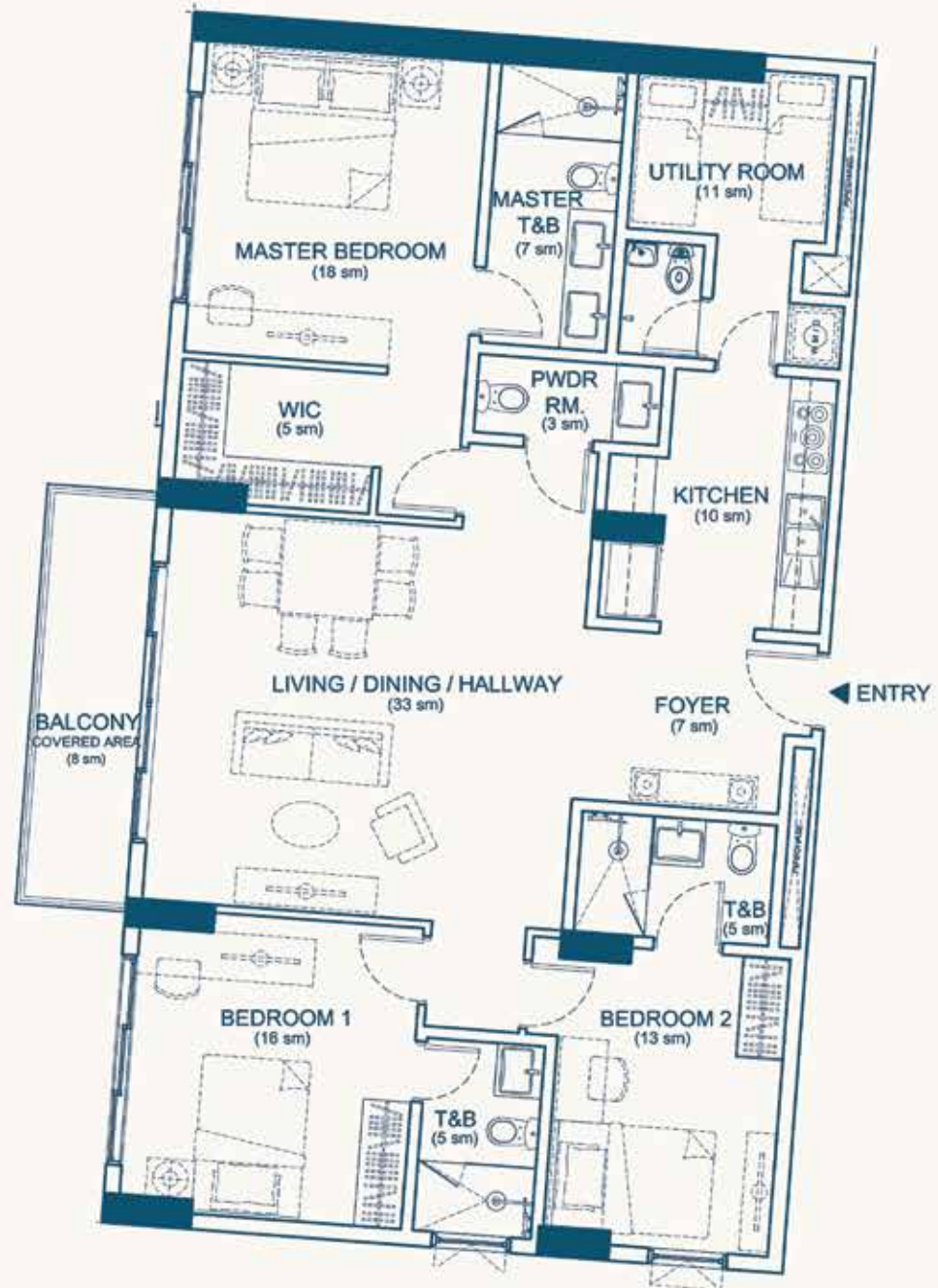


Typical Unit Layout  
SOLIHUYA UNIT D3  
2-BEDROOM  
130 SQM





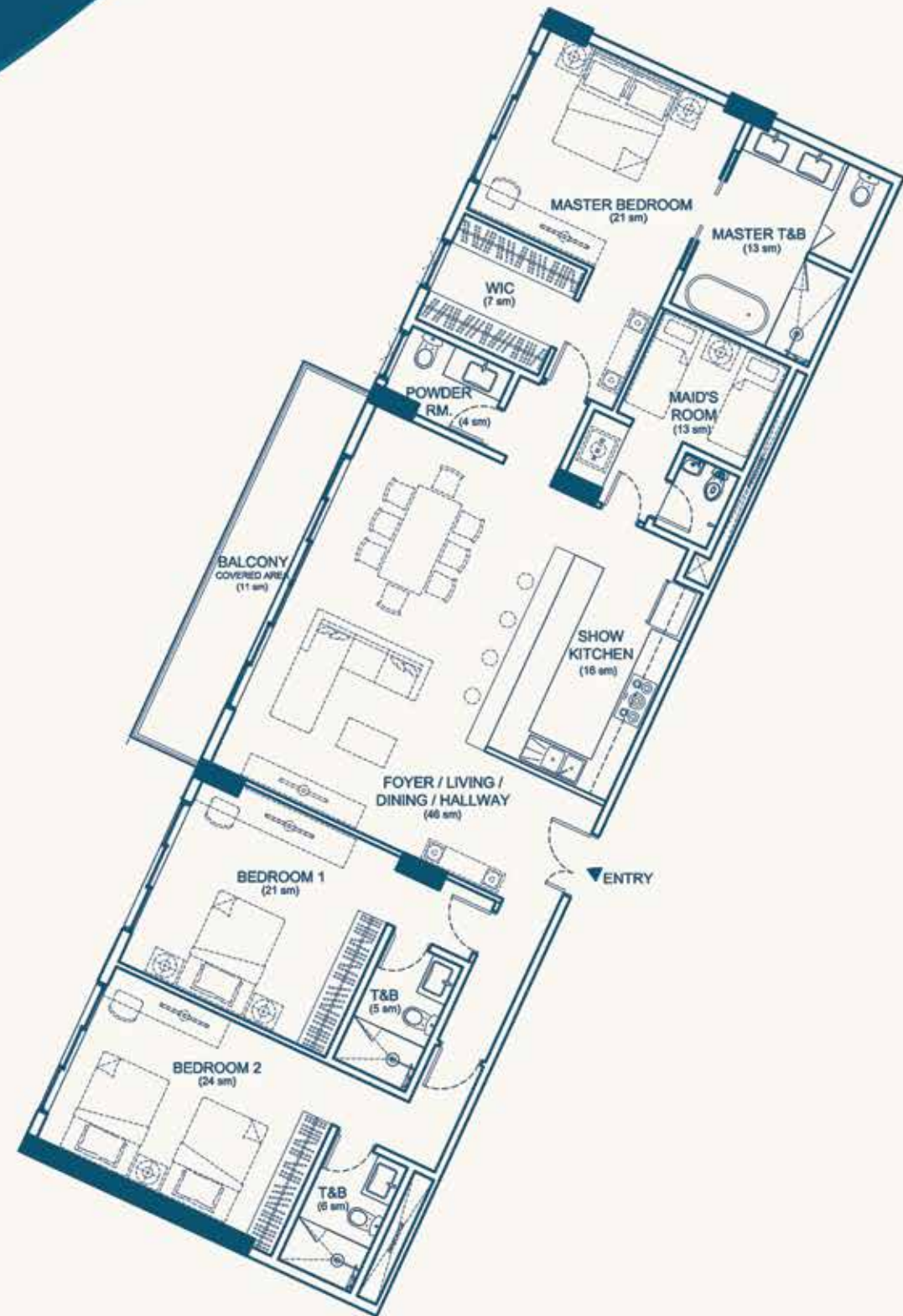
Typical Unit Layout  
SOLHIYA UNIT C  
3 BEDROOM  
141SQM



KEYPLAN



Typical Unit Layout  
SOLHIYA UNIT E  
3 BEDROOM SUITE  
187 SQM





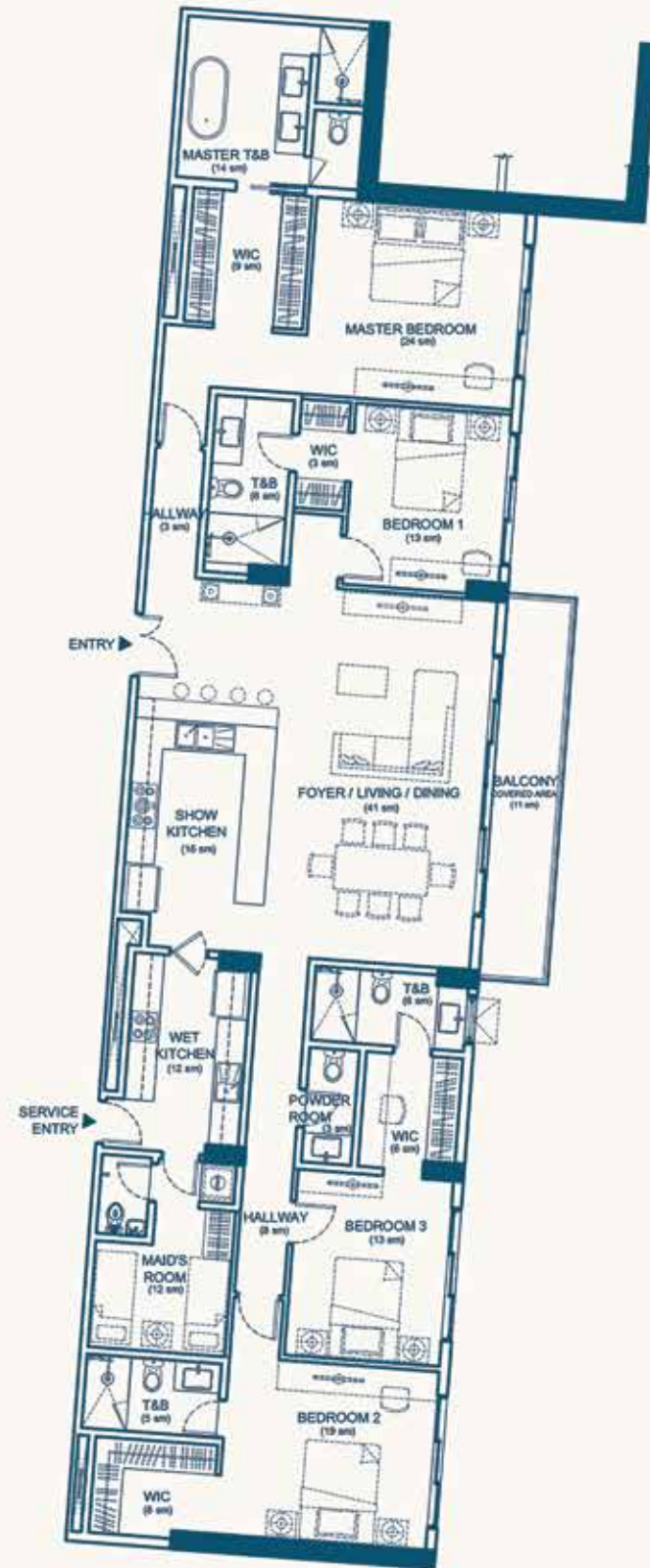
\*Artist's Illustration



4BR Living and Dining Area



Typical Unit Layout  
SOLHIYA UNIT A  
4 BEDROOM SUITE  
230 SQM





## BUILDING FEATURES

---

- Secure, gated community
- 2 elevators per building
- Automatic Fire Detection and Alarm System
- 100% standby emergency power
- 3-day back-up water supply
- Parking levels equipped with ventilation
- CCTV monitoring systems in strategic common areas
- Exclusive and elevated entry

## UNIT FINISHES

---

- Solid-core, wood panel main entry door
- Engineered wood flooring at living, dining, and bedrooms
- Homogeneous floor tiles for kitchen, toilet and bath, balcony, and maid's quarter
- Semi-gloss painted underslab soffit and ceiling
- Semi-gloss painted walls
- Laminated modular cabinet system cooktop and stainless steel sink for kitchen
- Laminated closets for bedrooms
- Glass-enclosed showers
- Water closet and lavatory
- Provisions for voice, data, and cable TV connection
- Rangehood, cooktop, oven and refrigerator for Solihiya
- Split-type inverter air-conditioning units





## PROJECT TEAM

---

- Architecture : Gallego Architects  
Interior Design : Erfe & Associates and Guillermo J. Valdez & Associates  
Structural Design : Sy<sup>2</sup> + Associates, Inc.  
MEPF Design : Meinhardt Philippines, Inc.  
Quantity Surveyor : Arcadis Philippines, Inc  
Feng Shui : Dr. Andy Tan



Visit our model unit at Sanson Road, Lahug, Cebu City or call 0917-599-ROCK  
[www.32sansonbyrockwell.com](http://www.32sansonbyrockwell.com)

A property developed by  ROCKWELL LAND CORPORATION

© March 2020

HLURB LS No. 030362  
HLURB CVR AA-2017/10-421  
Required date of Completion: October 7, 2018  
32 Sanson Road, Lahug, Cebu City