

SMDC



JADE

RESIDENCES

Project Briefing



Artist's perspective only



JADE

RESIDENCES

**PRECIOUS INVESTMENT,
EFFORTLESS LIVING**

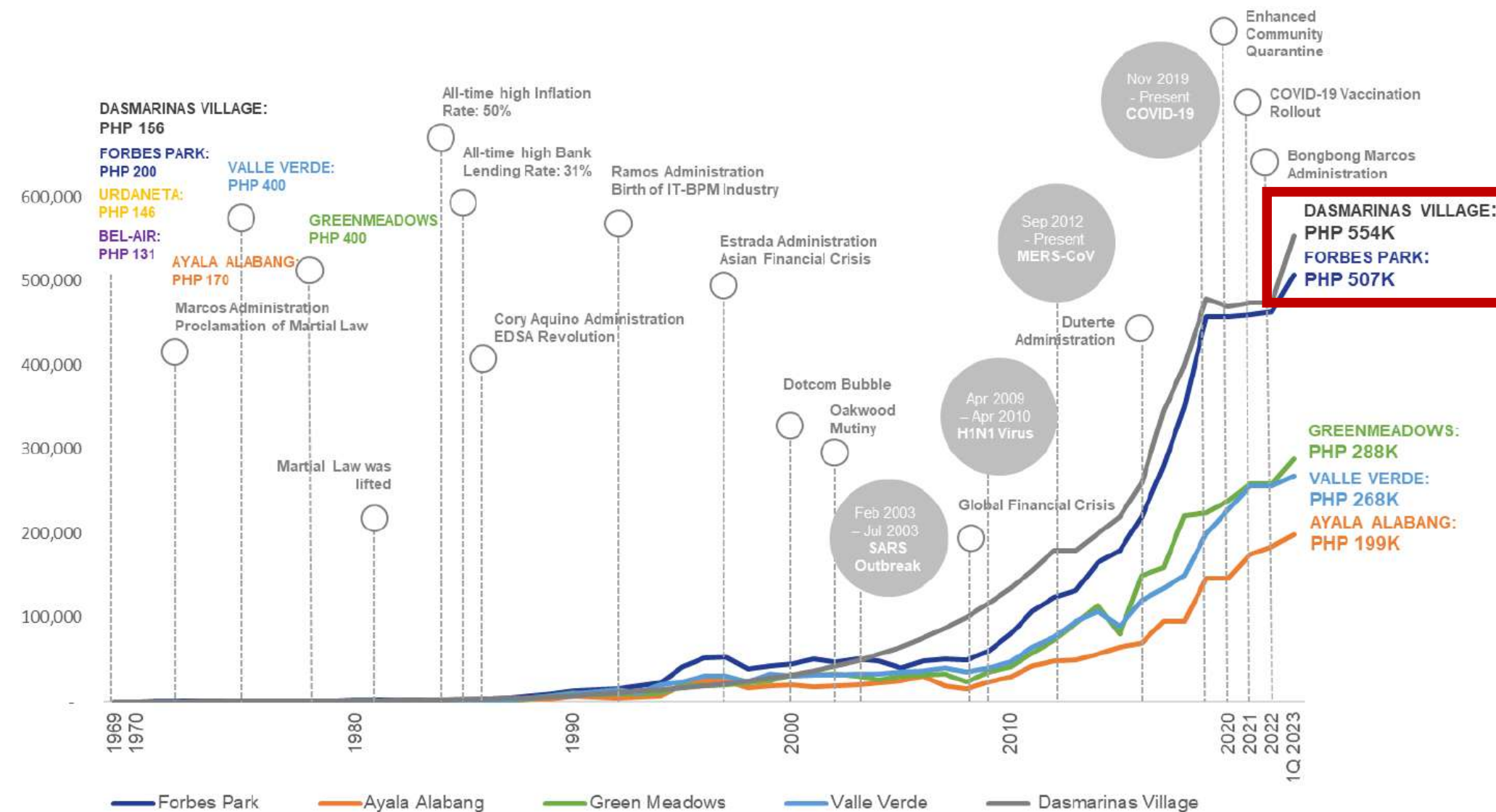
MAKATI IS THE MOST PREMIER CBD AND ADDRESS IN THE PHILIPPINES



40% of the top 1,000 multinational and local corporations in the country are located here.

MAKATI IS THE MOST PREMIER CBD AND ADDRESS IN THE PHILIPPINES

Metro Manila Villages Average Price Per Sqm. | 1969 to 1Q 2023



Home to the most expensive villages.

Leechiu Property Consultants, Philippine Property Market Update, May 26 2023

For training purposes only. This material may be subject to change and not for reproduction and distribution without prior consent of developer.

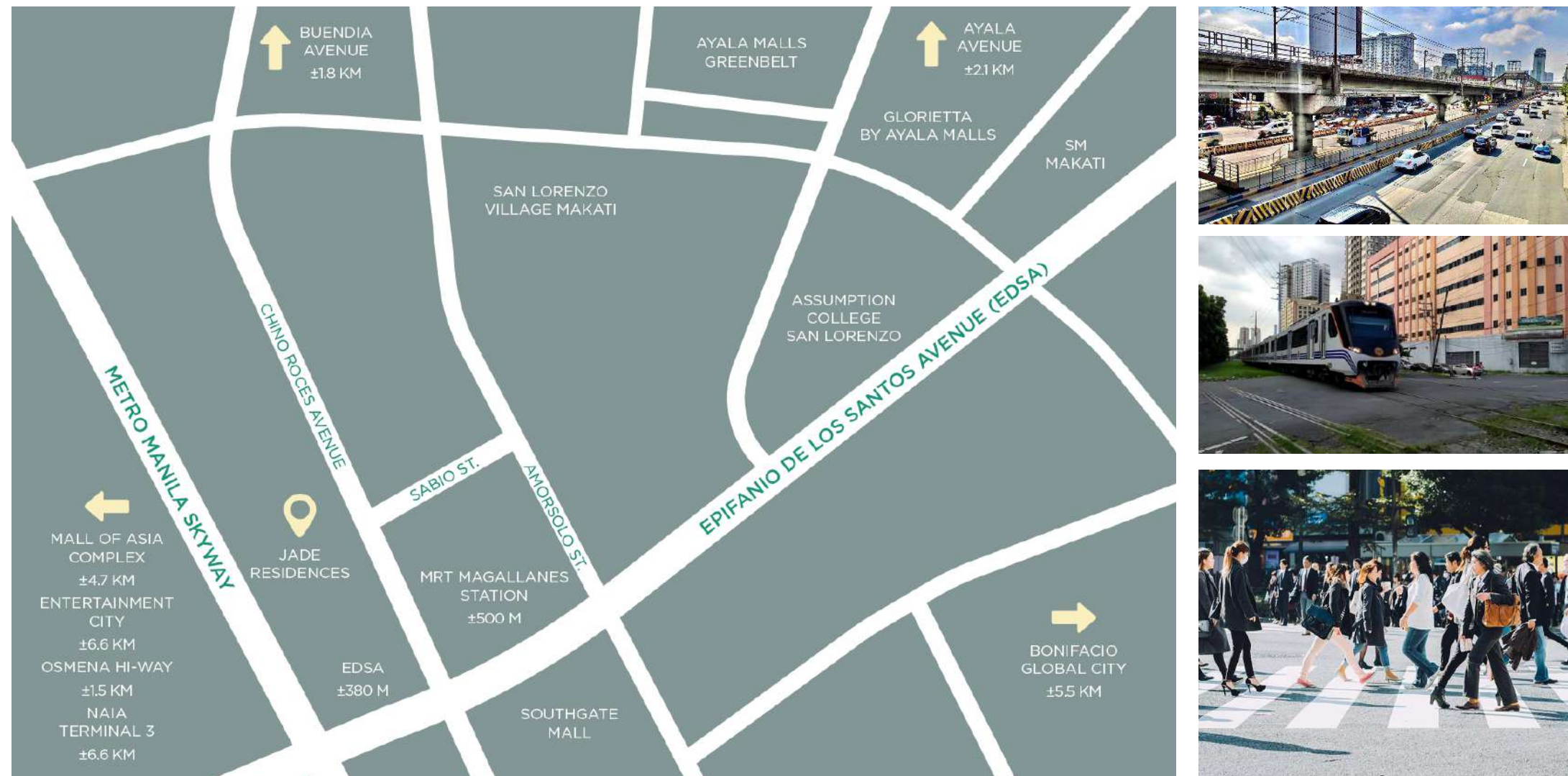
MAKATI IS THE MOST PREMIER CBD AND ADDRESS IN THE PHILIPPINES

Metro Manila CBD	Unit Absorption
Bay Area	95.67%
Makati City	96.99%
Alabang	94.16%
Ortigas	90.04%
Quezon City	95.42%
Taguig City	96.27%

Source: Santos Knight Frank Research

**Makati's residential unit absorption
surpasses all major CBDs in Metro Manila.**

CHINO ROCES AVENUE IS MAKATI'S NEW ADDRESS OF CHOICE



The thriving community and excellent connectivity, lay the strong foundation for it to transform into a more modern, vibrant mixed-use district.

THE FUTURE OF CHINO ROCES



Artist's Perspective of Chino Roces c/o L.A. GAN Associates

The Comprehensive Land Use Plan will develop a more dynamic Mixed-Use District called the Makati Southwest Gateway.

THE OPPORTUNITY FOR INVESTORS

SMDC MAKATI PROJECTS	LAUNCH YEAR	LAUNCH PRICE PER SQM	CURRENT PRICE PER SQM
Red Residences	2018	P211K	P253K
Mint Residences	2020	P260K	P265K

Investors can capitalize on SMDC Jade Residences by investing at its pre-selling stage before prices surge.

CHINO ROCES HAS BECOME A HOTSPOT FOR OTHER DEVELOPERS

Avida



- ✓ Complete Development
- ✓ No spot DP Term
- ✓ Low MA

**THE BEST TIME TO INVEST
IN SMDC JADE RESIDENCES IS TODAY.**

SMDC



JADE

RESIDENCES

Project Briefing



Artist's perspective only

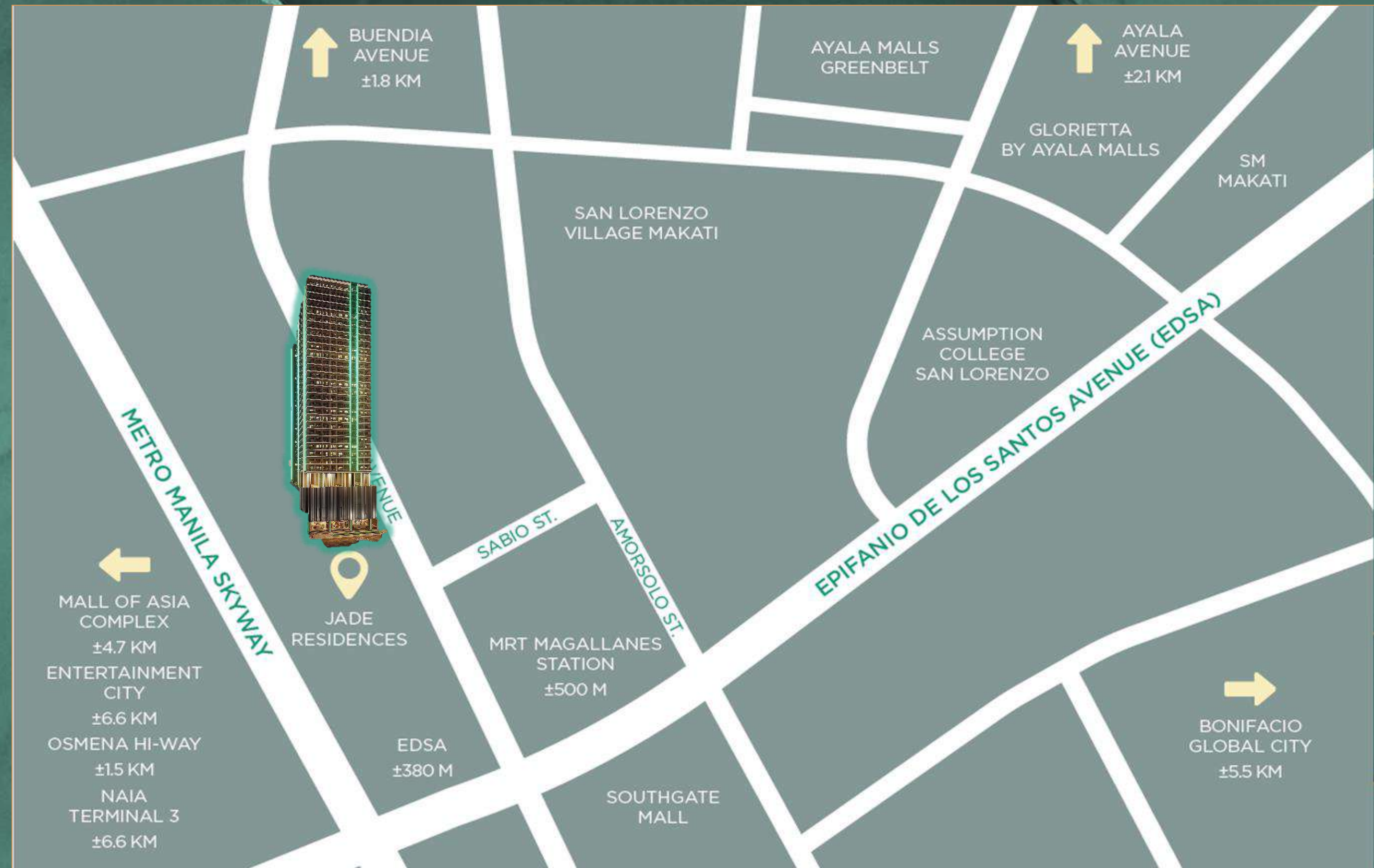
Vicinity Map

NEARBY ESTABLISHMENTS

- MRT - Magallanes
- Alphaland
- Waltermart
- Greenbelt
- Glorietta / SM Makati
- Don Bosco - Makati
- Collegio San Agustin
- Assumption College

MAJOR ROADS / ACCESS

- EDSA
- SLEX / Quirino Avenue
- Chino Roces Avenue



Project Overview

Location	Chino Roces Avenue, Makati City
Lot Area	5,171 sqm
No. of floors	34 Storeys 2 basement parking 1 roof deck
No. of units	1,998 units
No. of parking slots	364 Slots
Turnover date	March 31, 2029
Building Features	12 Elevators Mailroom 24-hours security and maintenance CCTV System Fire Sprinkler System FDAS Garbage room



Project Overview



Location	Chino Roces Avenue, Makati City
Lot Area	5,171 sqm
No. of floors	34 Storeys 2 basement parking 1 roof deck
No. of units	1,998 units
No. of parking slots	364 Slots
Turnover date	March 31, 2029
Building Features	12 Elevators Mailroom 24-hours security and maintenance CCTV System Fire Sprinkler System FDAS Garbage room



For training purposes only. This material may be subject to change and not for reproduction and distribution without prior consent of developer.

Ground Floor – Commercial Area / Frontage



Ground Floor – Drop Off



Artist's perspective only

Ground Floor – Main Lobby



Artist's perspective only

Ground Floor - Tea Lounge



Artist's perspective only

Ground Floor – Media Lounge



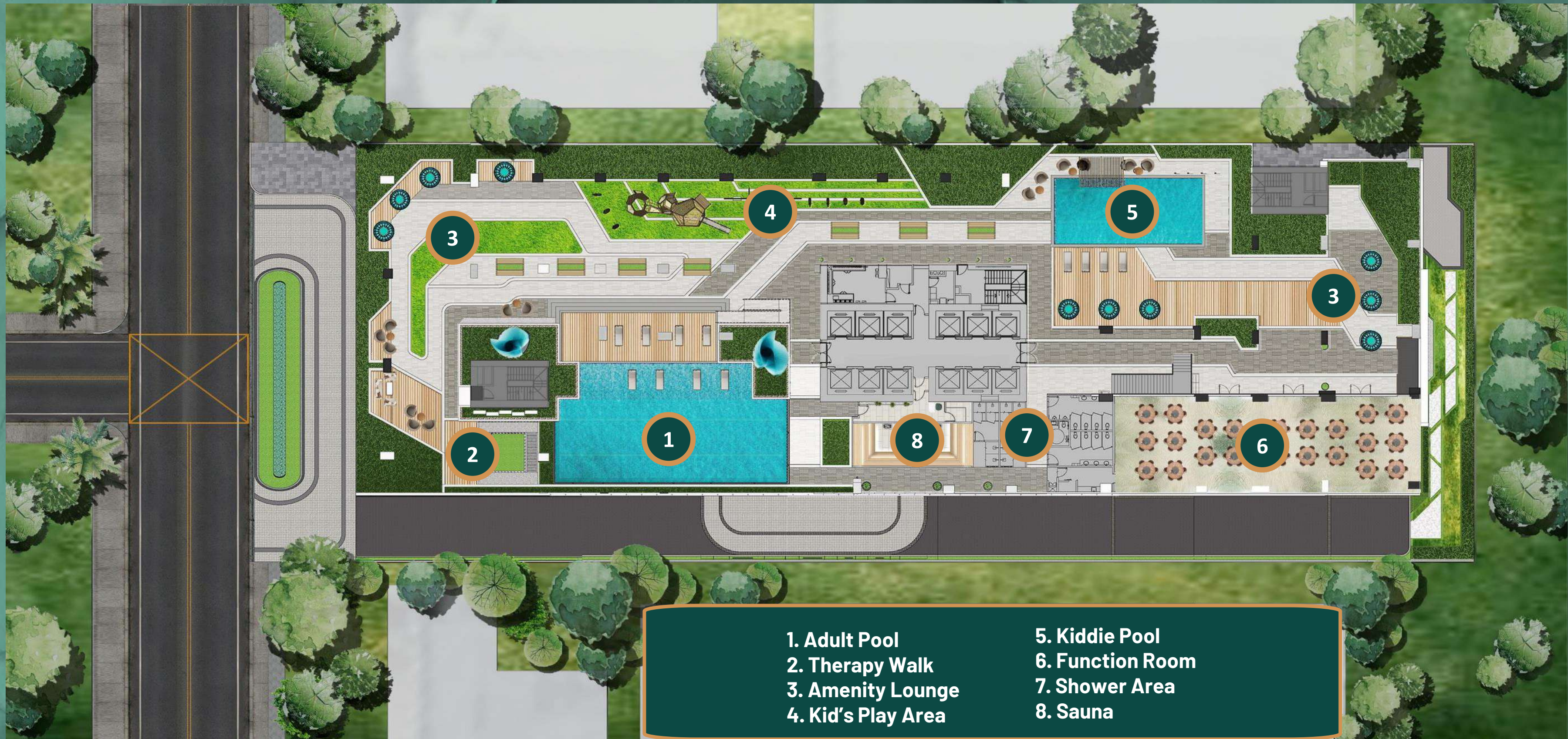
Artist's perspective only

Ground Floor – Elevator Lobby



Artist's perspective only

Amenity Floor – Floor Plan



- 1. Adult Pool
- 2. Therapy Walk
- 3. Amenity Lounge
- 4. Kid's Play Area

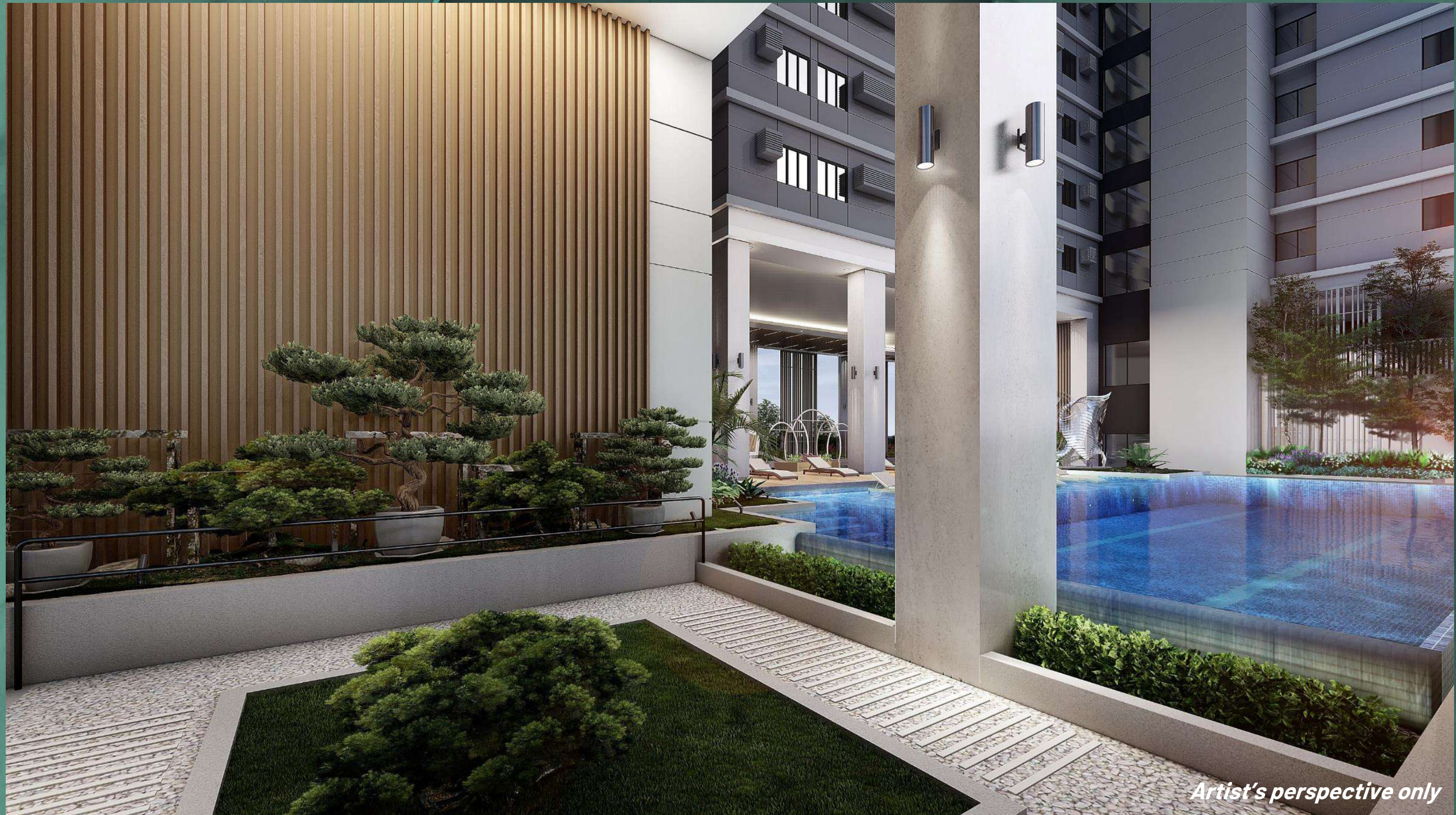
- 5. Kiddie Pool
- 6. Function Room
- 7. Shower Area
- 8. Sauna

Amenity Floor – Adult pool



Artist's perspective only

Amenity Floor – Therapy Walk



Artist's perspective only

Amenity Floor – Amenity Lounge



Artist's perspective only

Amenity Floor – Kid's Play Area



Artist's perspective only

Amenity Floor – Kiddie Pool



Artist's perspective only

Amenity Floor - Function Room



Artist's perspective only

Amenity Floor - Gym / Yoga Area



Artist's perspective only

Amenity Floor - Gym / Yoga Area



Artist's perspective only

Amenity Floor - Gym / Yoga Area



Artist's perspective only

Roof Deck – Sky Deck



Artist's perspective only

SMDC



JADE
RESIDENCES

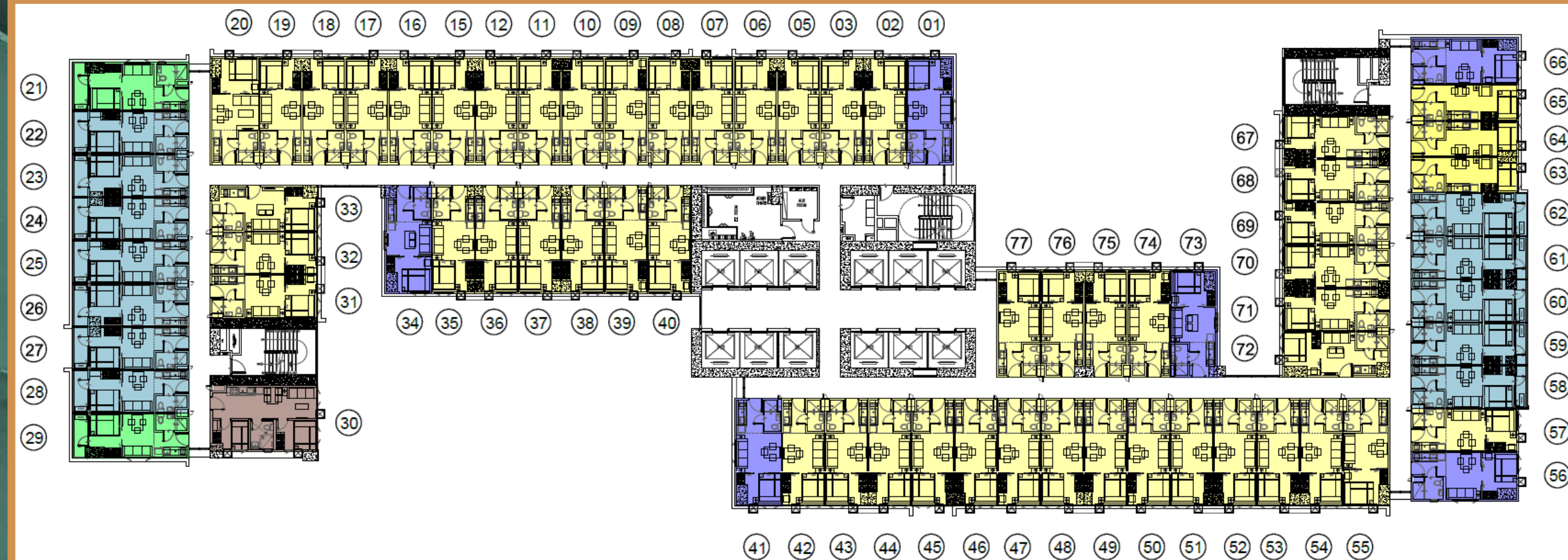
Typical Floor Plans and Layouts

Project Briefing



Typical Floor Plans and Unit Layouts

Unit Type	Size (sqm)	Distribution
Studio	20.15	81
1 - Bedroom	24.03 - 27.32	1,404
1 - Bedroom End Unit	26.13 - 27.32	162
1 - Bedroom w/ Balcony	26.04	270
1 - Bedroom End Unit w/ Balcony	27.61 - 29.61	54
2 - Bedroom End Unit	36.62	27
TOTAL		1,998

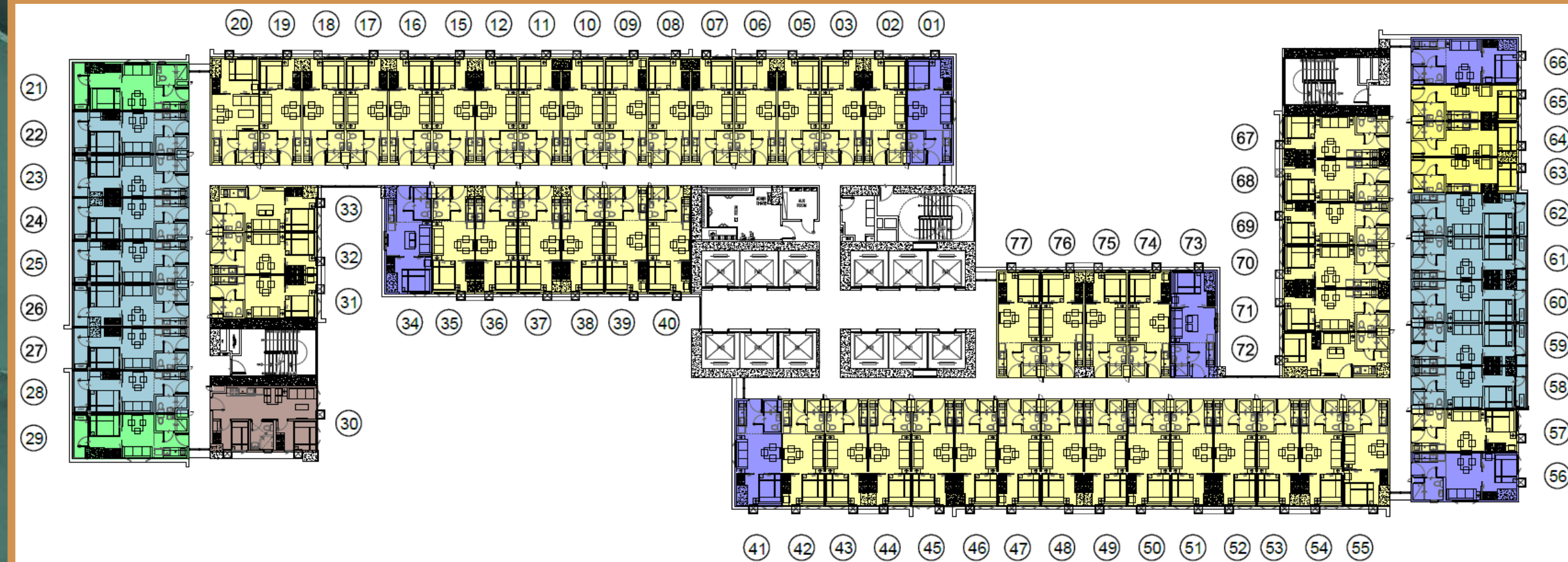


Legend:

- 1 Bedroom Unit
- 1 Bedroom End Unit
- 1 Bedroom Unit W/ Balcony
- 1 Bedroom End Unit W/ Balcony
- 2 Bedroom End Unit
- Studio Unit

Typical Floor Plans and Unit Layouts

Unit Type	Size (sqm)	Per floor
Studio	20.15	3
1 - Bedroom	24.03 - 27.32	50
1 - Bedroom End Unit	26.13 - 27.32	6
1 - Bedroom w/ Balcony	26.04	12
1 - Bedroom End Unit w/ Balcony	27.61 - 29.61	2
2 - Bedroom End Unit	36.62	1
TOTAL		74

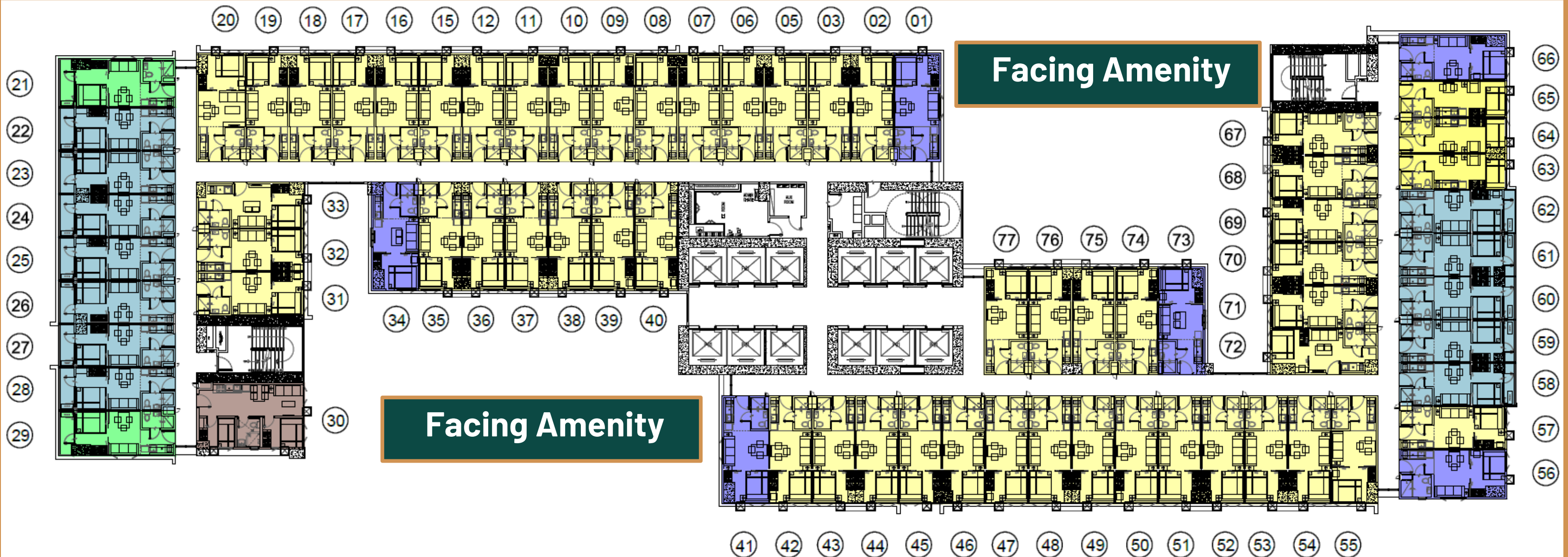


Legend:

- 1 Bedroom Unit
- 1 Bedroom End Unit
- 1 Bedroom Unit W/ Balcony
- 1 Bedroom End Unit W/ Balcony
- 2 Bedroom End Unit
- Studio Unit

Typical Floor Plans and Unit Layouts

Facing Alabang / Laguna

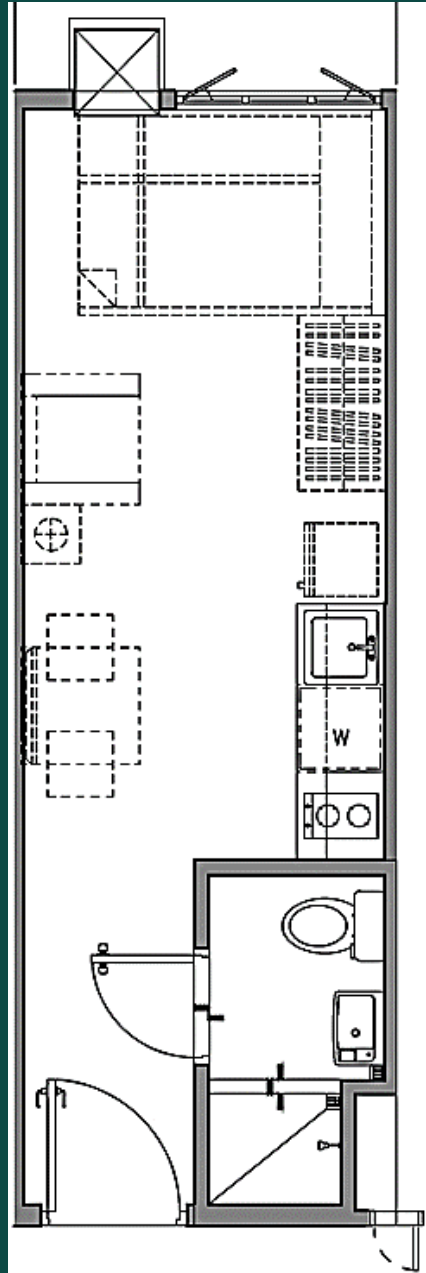


Facing M0A Skyline / Entertainment City

Facing Manila / Makati

Typical Floor Plans and Unit Layouts

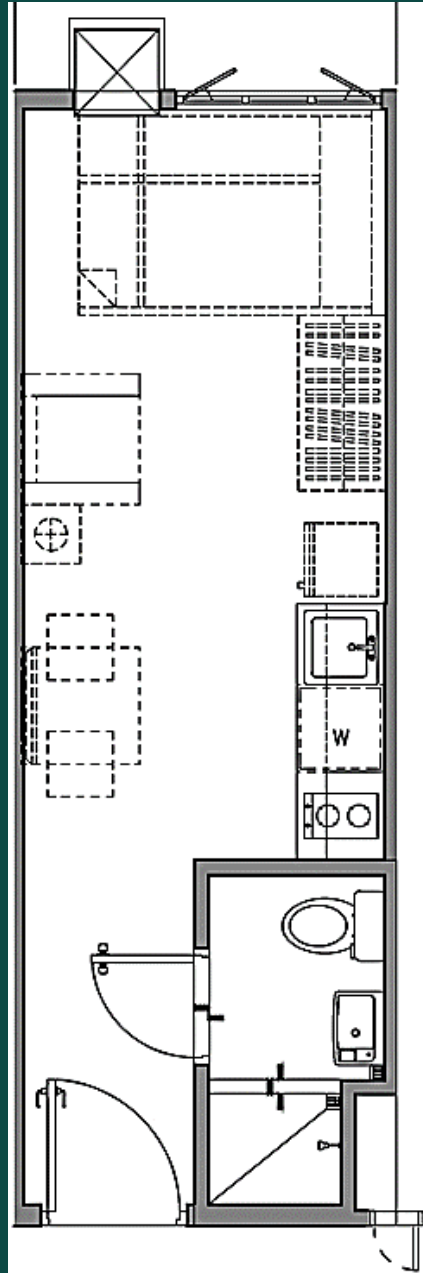
Studio
20.15sqm



STUDIO DRESSED UP UNIT PERSPECTIVE

Typical Floor Plans and Unit Layouts

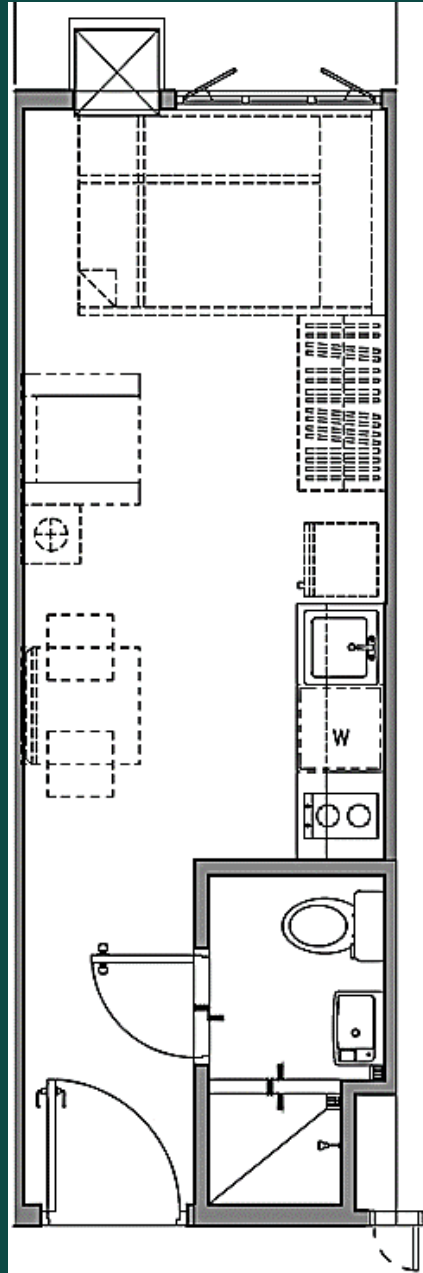
Studio
20.15sqm



STUDIO DRESSED UP UNIT PERSPECTIVE

Typical Floor Plans and Unit Layouts

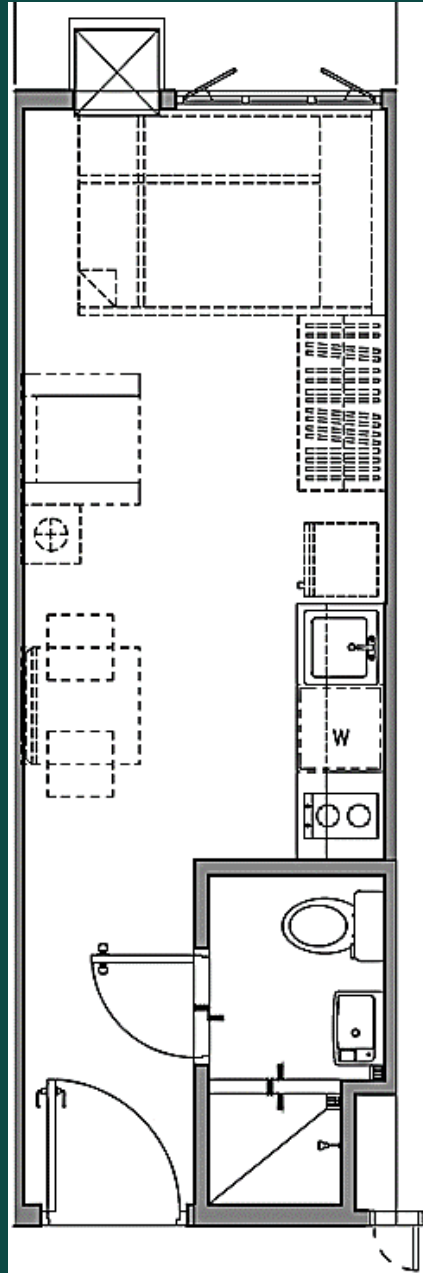
Studio
20.15sqm



STUDIO DRESSED UP UNIT PERSPECTIVE

Typical Floor Plans and Unit Layouts

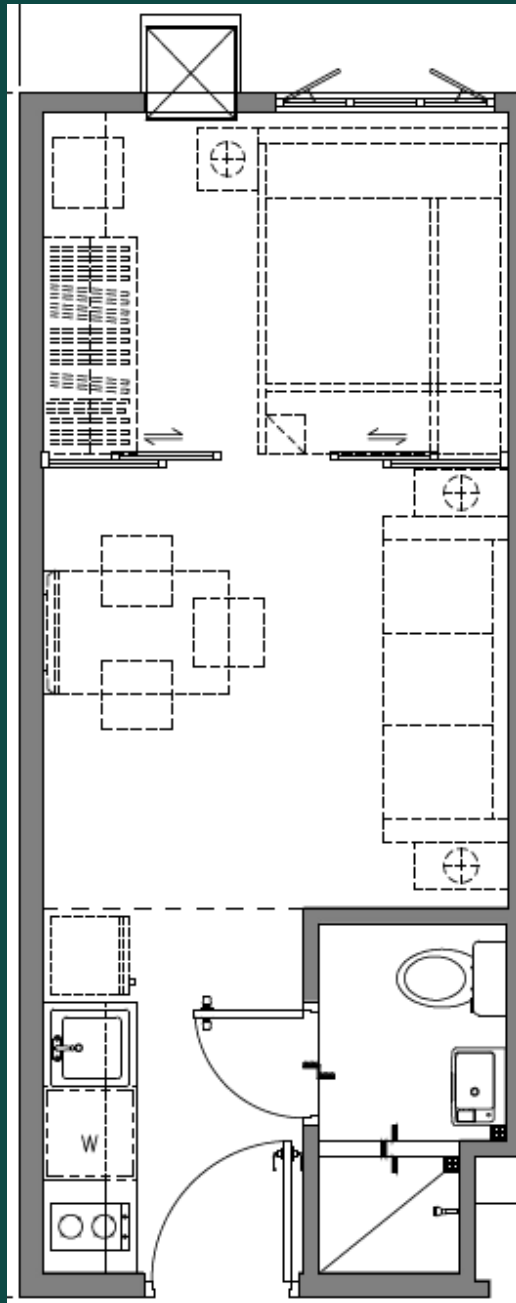
Studio
20.15sqm



STUDIO DRESSED UP UNIT PERSPECTIVE

Typical Floor Plans and Unit Layouts

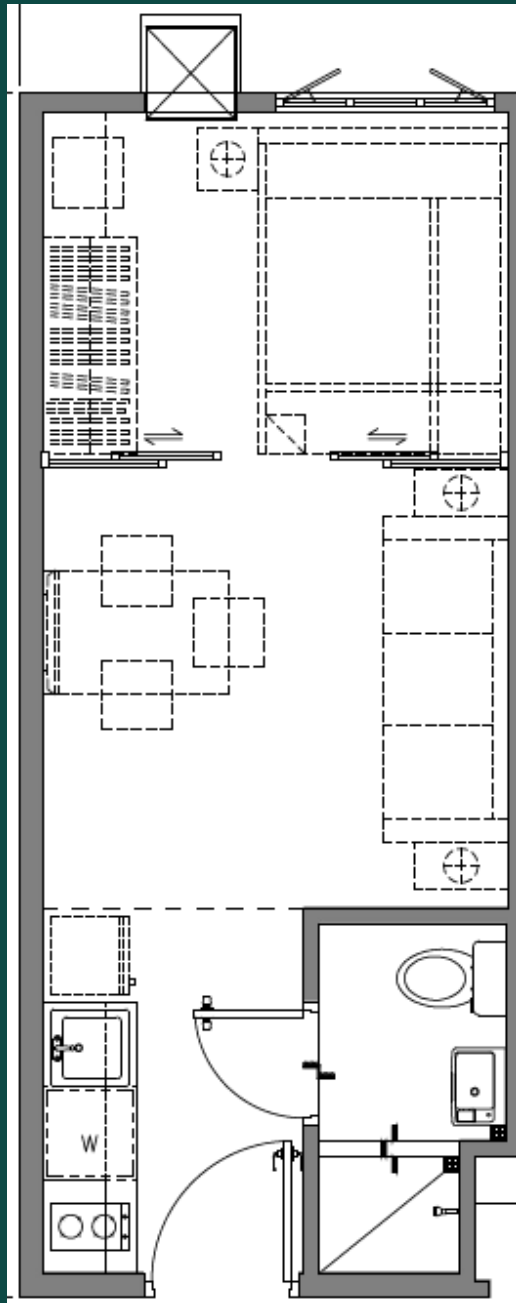
1 - Bedroom
24.03 - 27.32 sqm



1 - BEDROOM DRESSED UP UNIT PERSPECTIVE

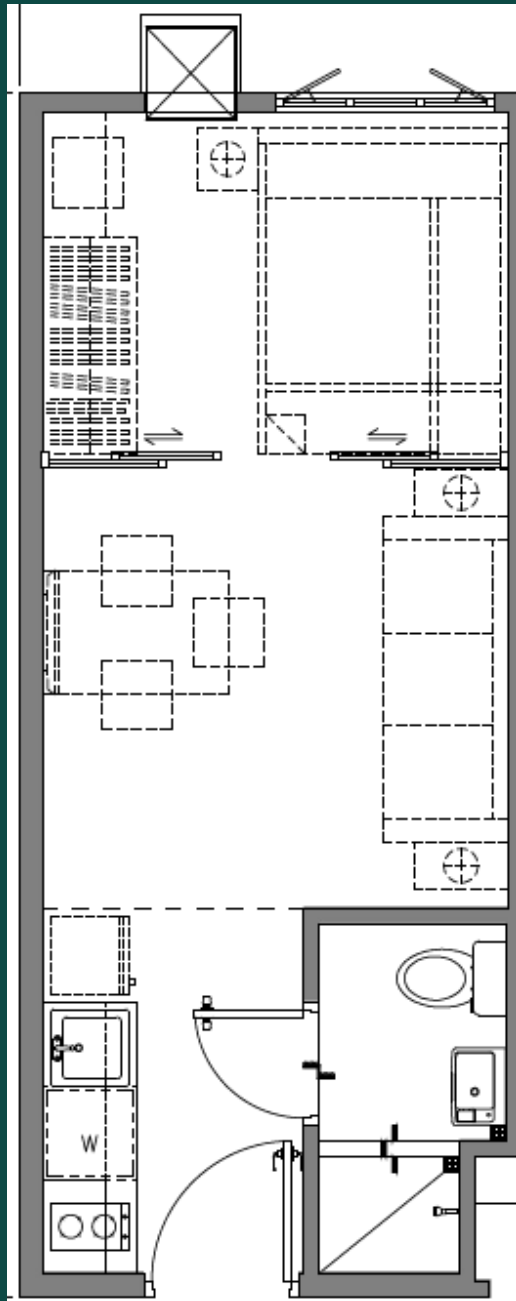
Typical Floor Plans and Unit Layouts

1 - Bedroom
24.03 - 27.32 sqm



Typical Floor Plans and Unit Layouts

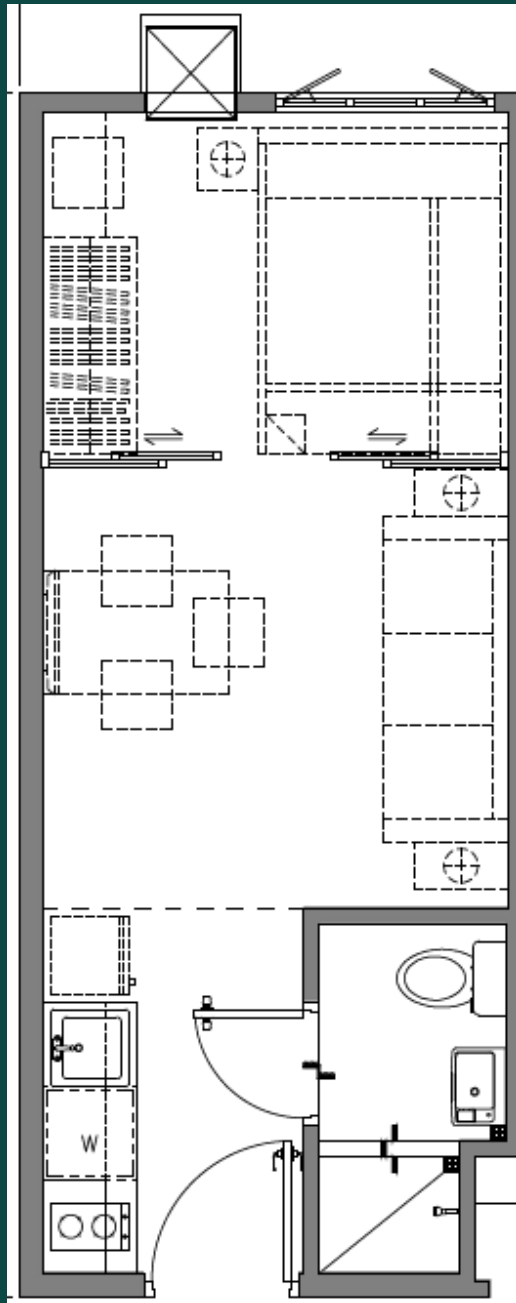
1 - Bedroom
24.03 - 27.32 sqm



1 - BEDROOM DRESSED UP UNIT PERSPECTIVE

Typical Floor Plans and Unit Layouts

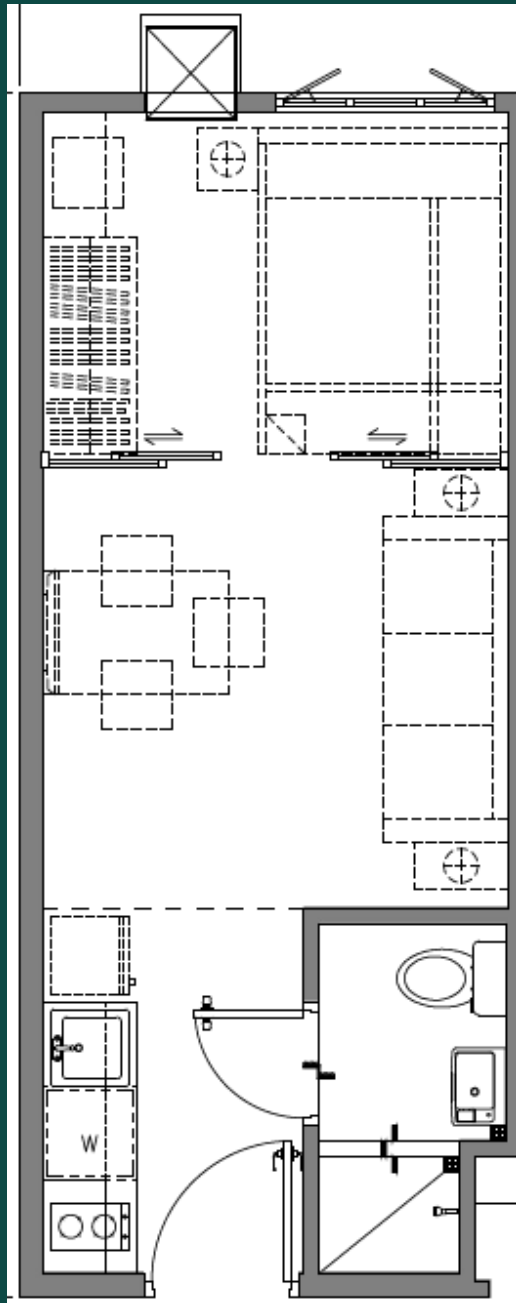
1 - Bedroom
24.03 - 27.32 sqm



1 - BEDROOM DRESSED UP UNIT PERSPECTIVE

Typical Floor Plans and Unit Layouts

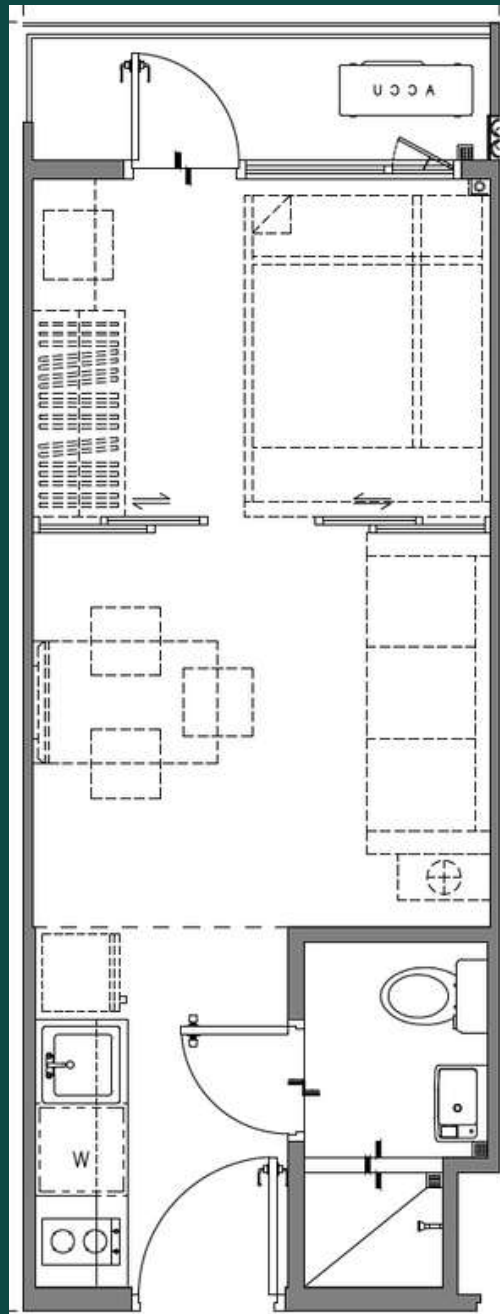
1 - Bedroom
24.03 - 27.32 sqm



1 - BEDROOM DRESSED UP UNIT PERSPECTIVE

Typical Floor Plans and Unit Layouts

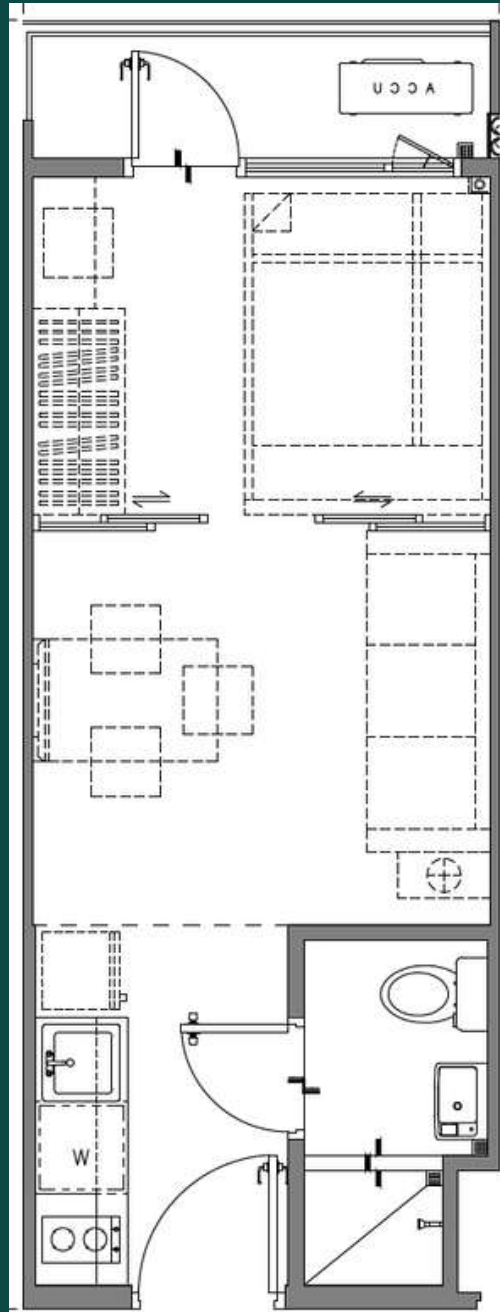
1 – Bedroom w/ Balcony
26.04 sqm



1 - BEDROOM WITH BALCONY DRESSED UP UNIT PERSPECTIVE

Typical Floor Plans and Unit Layouts

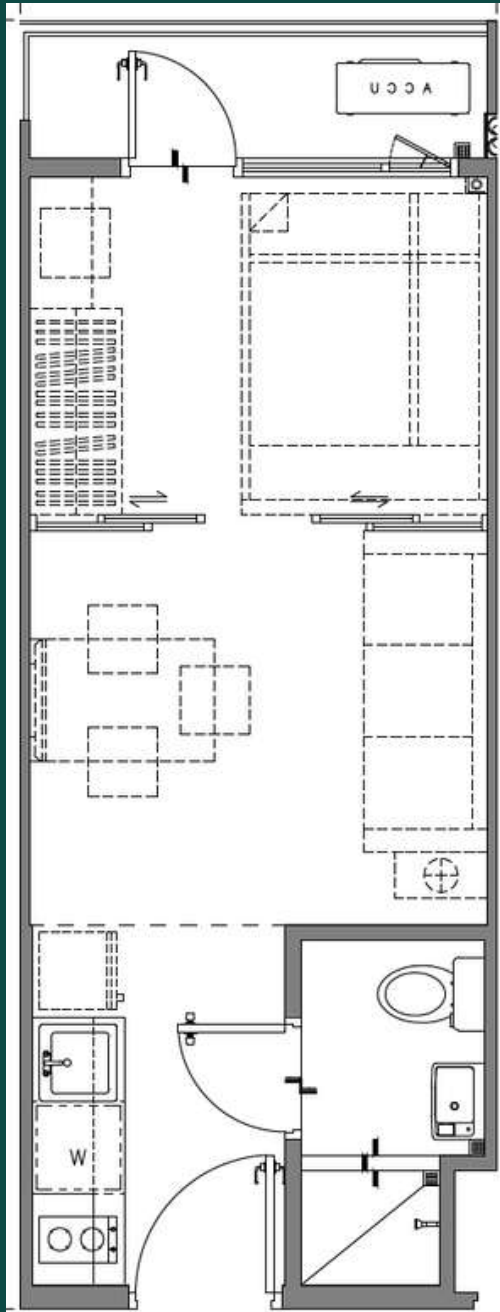
1 – Bedroom w/ Balcony
26.04 sqm



1 - BEDROOM WITH BALCONY DRESSED UP UNIT PERSPECTIVE

Typical Floor Plans and Unit Layouts

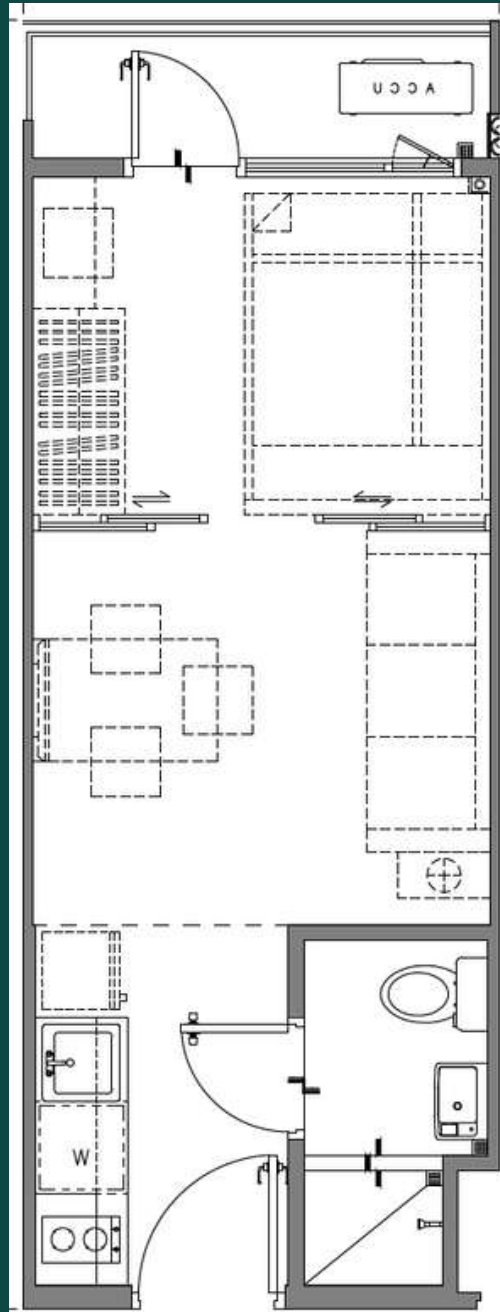
1 – Bedroom w/ Balcony
26.04 sqm



1 - BEDROOM WITH BALCONY DRESSED UP UNIT PERSPECTIVE

Typical Floor Plans and Unit Layouts

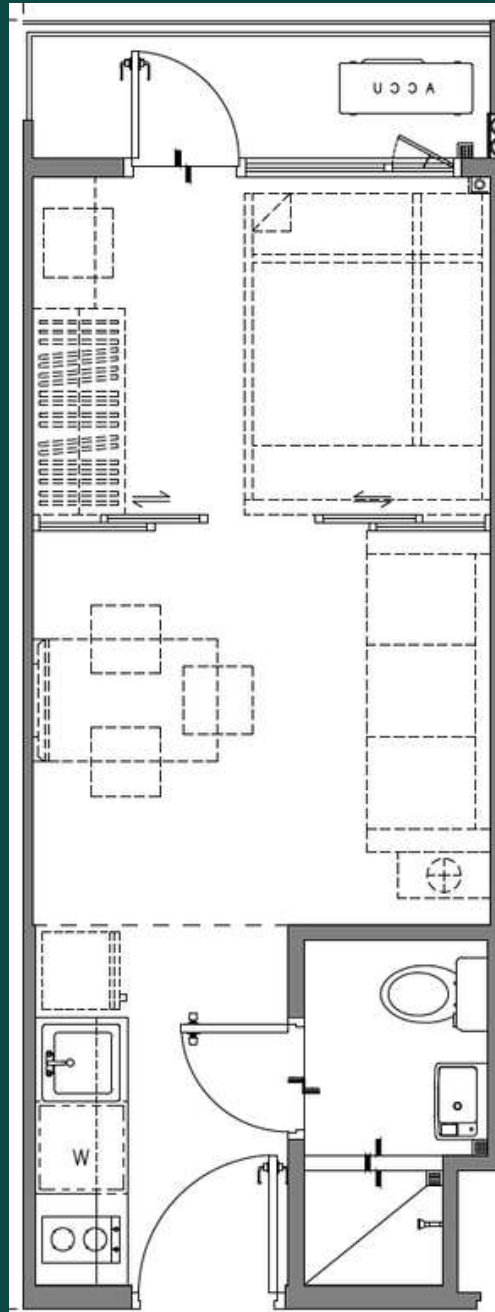
1 – Bedroom w/ Balcony
26.04 sqm



1 - BEDROOM WITH BALCONY DRESSED UP UNIT PERSPECTIVE

Typical Floor Plans and Unit Layouts

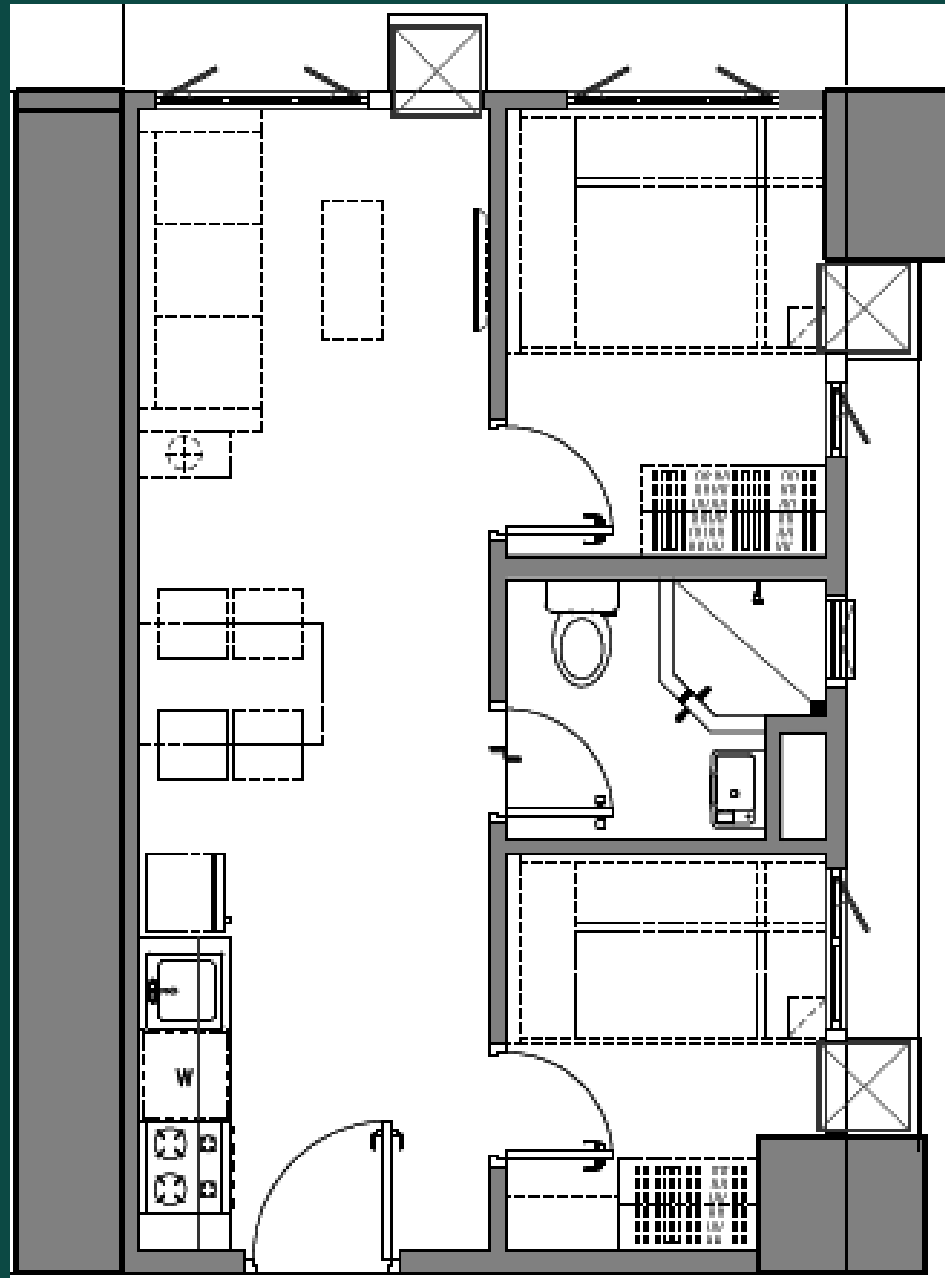
1 – Bedroom w/ Balcony
26.04 sqm



1 - BEDROOM WITH BALCONY DRESSED UP UNIT PERSPECTIVE

Typical Floor Plans and Unit Layouts

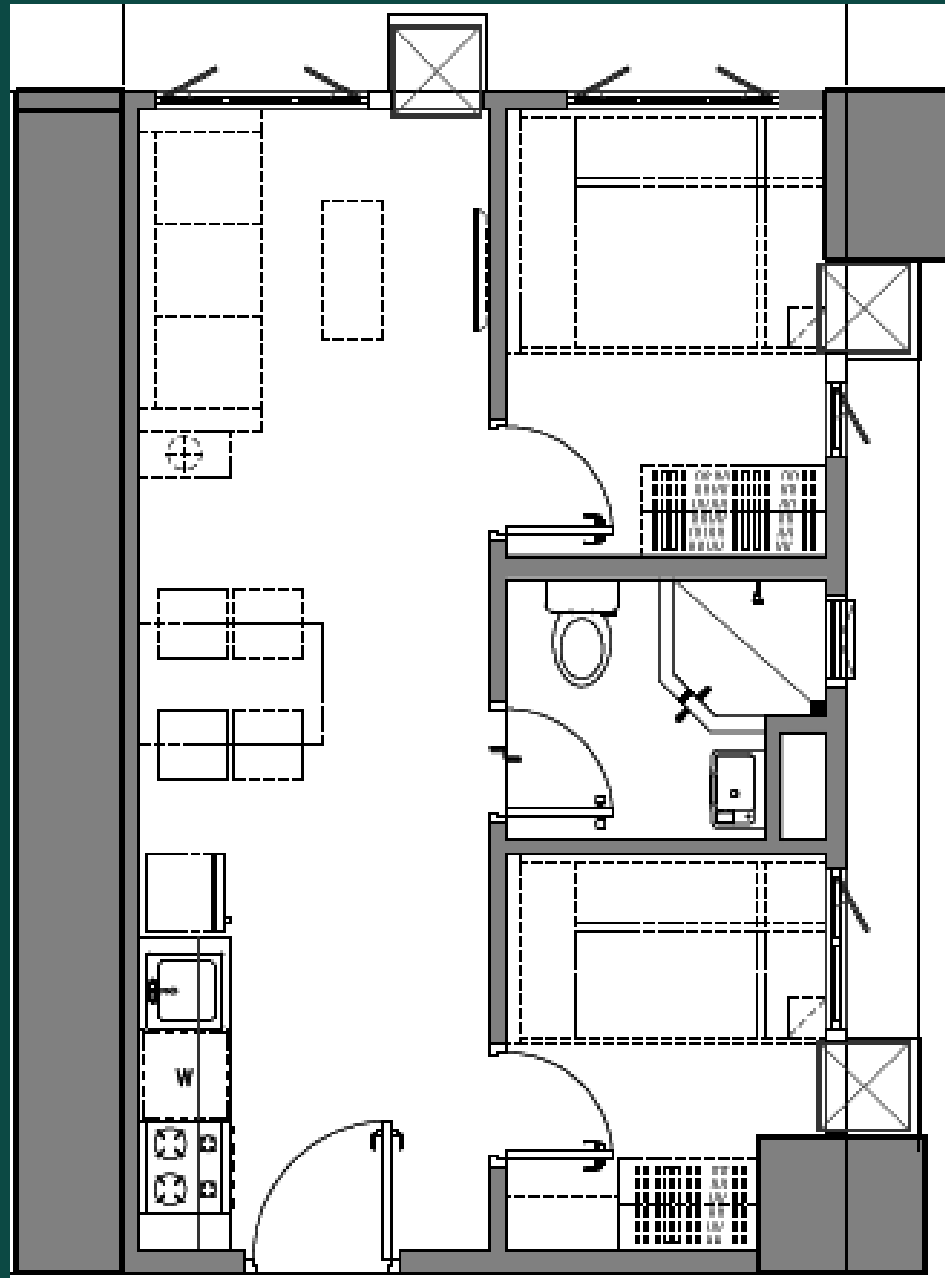
**2 - Bedroom End Unit
36.62 sqm**



2 - BEDROOM END DRESSED UP UNIT PERSPECTIVE

Typical Floor Plans and Unit Layouts

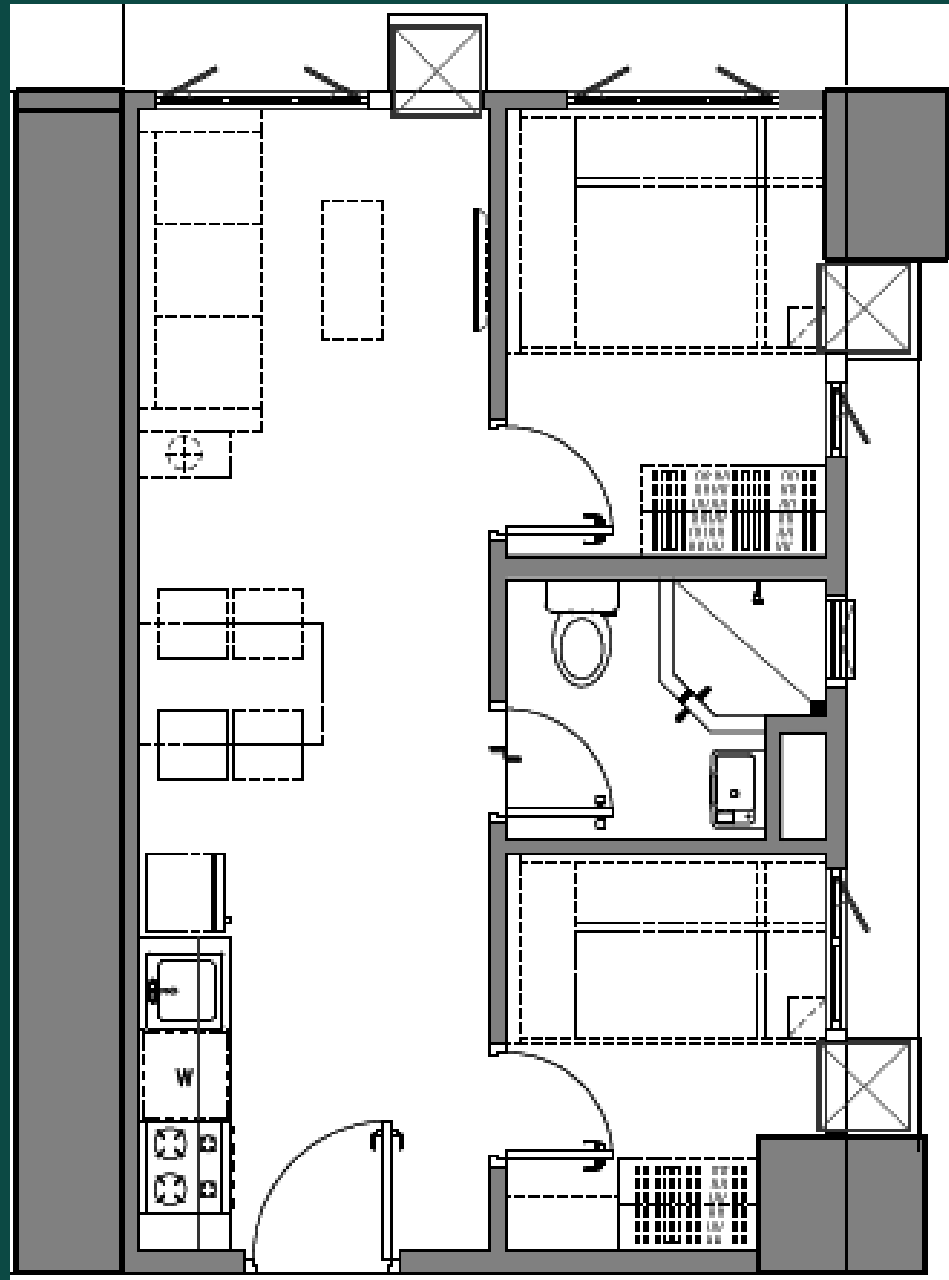
2 - Bedroom End Unit
36.62 sqm



2 - BEDROOM END DRESSED UP UNIT PERSPECTIVE

Typical Floor Plans and Unit Layouts

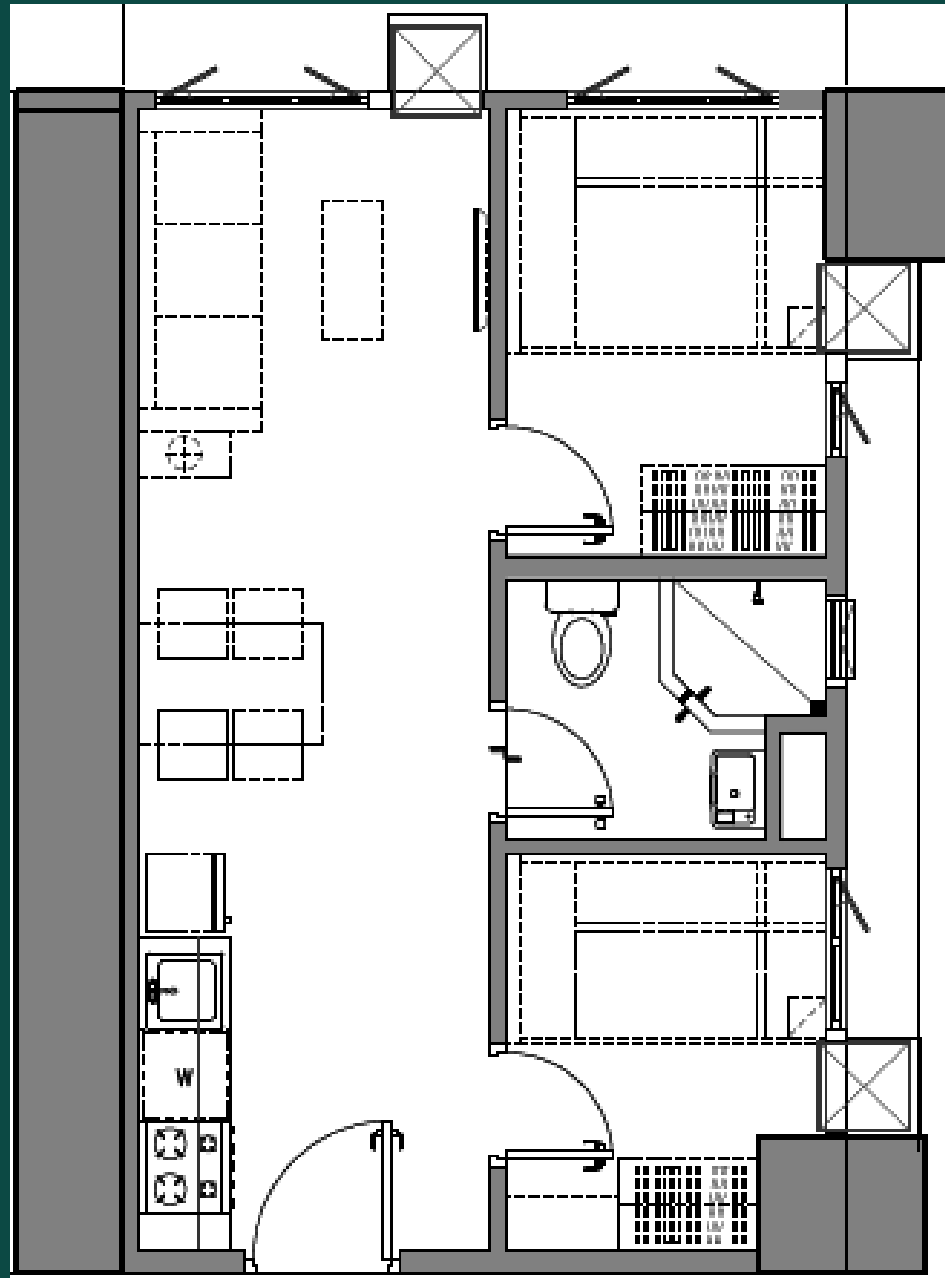
2 - Bedroom End Unit
36.62 sqm



2 - BEDROOM END DRESSED UP UNIT PERSPECTIVE

Typical Floor Plans and Unit Layouts

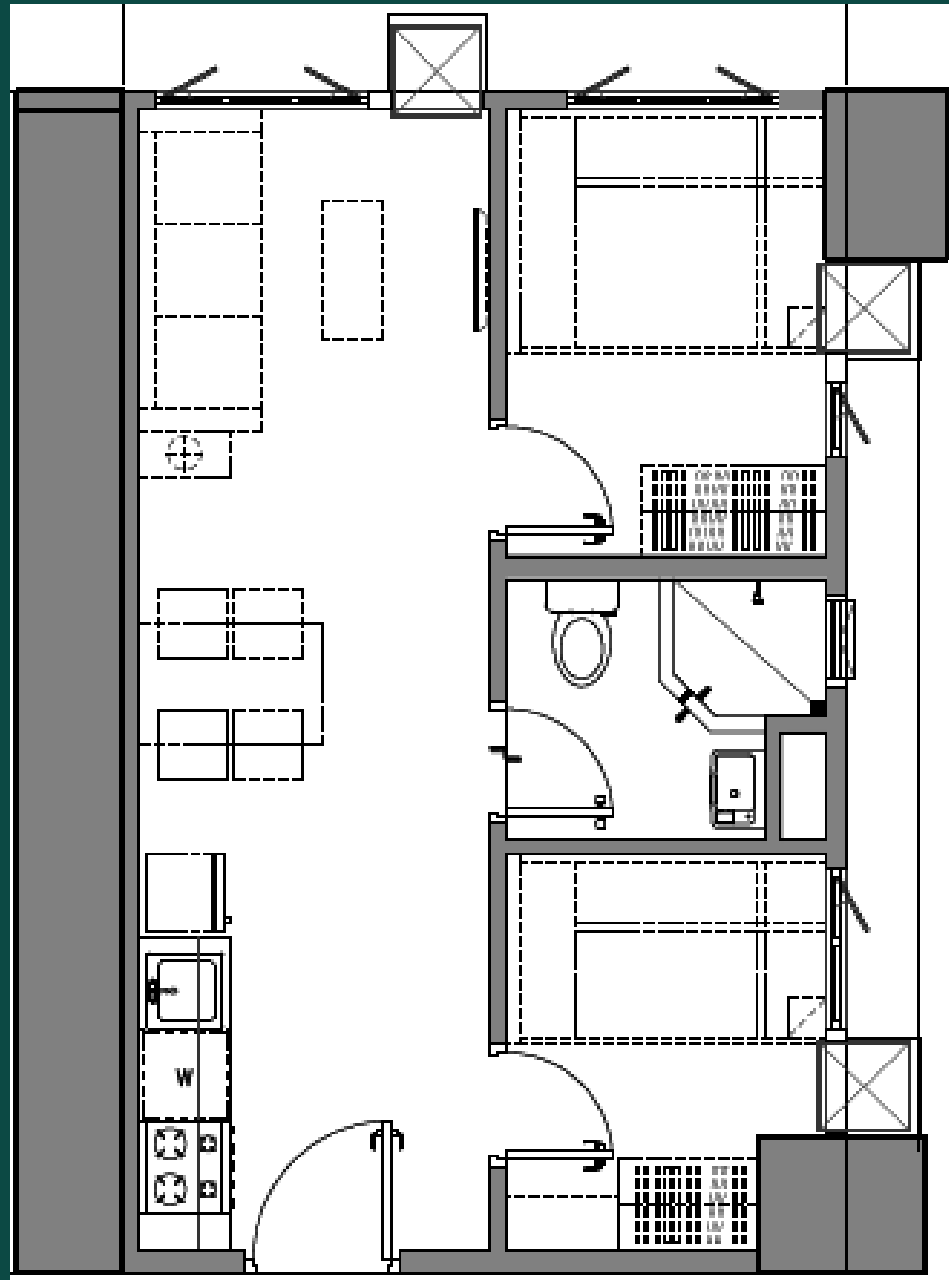
2 - Bedroom End Unit
36.62 sqm



2 - BEDROOM END DRESSED UP UNIT PERSPECTIVE

Typical Floor Plans and Unit Layouts

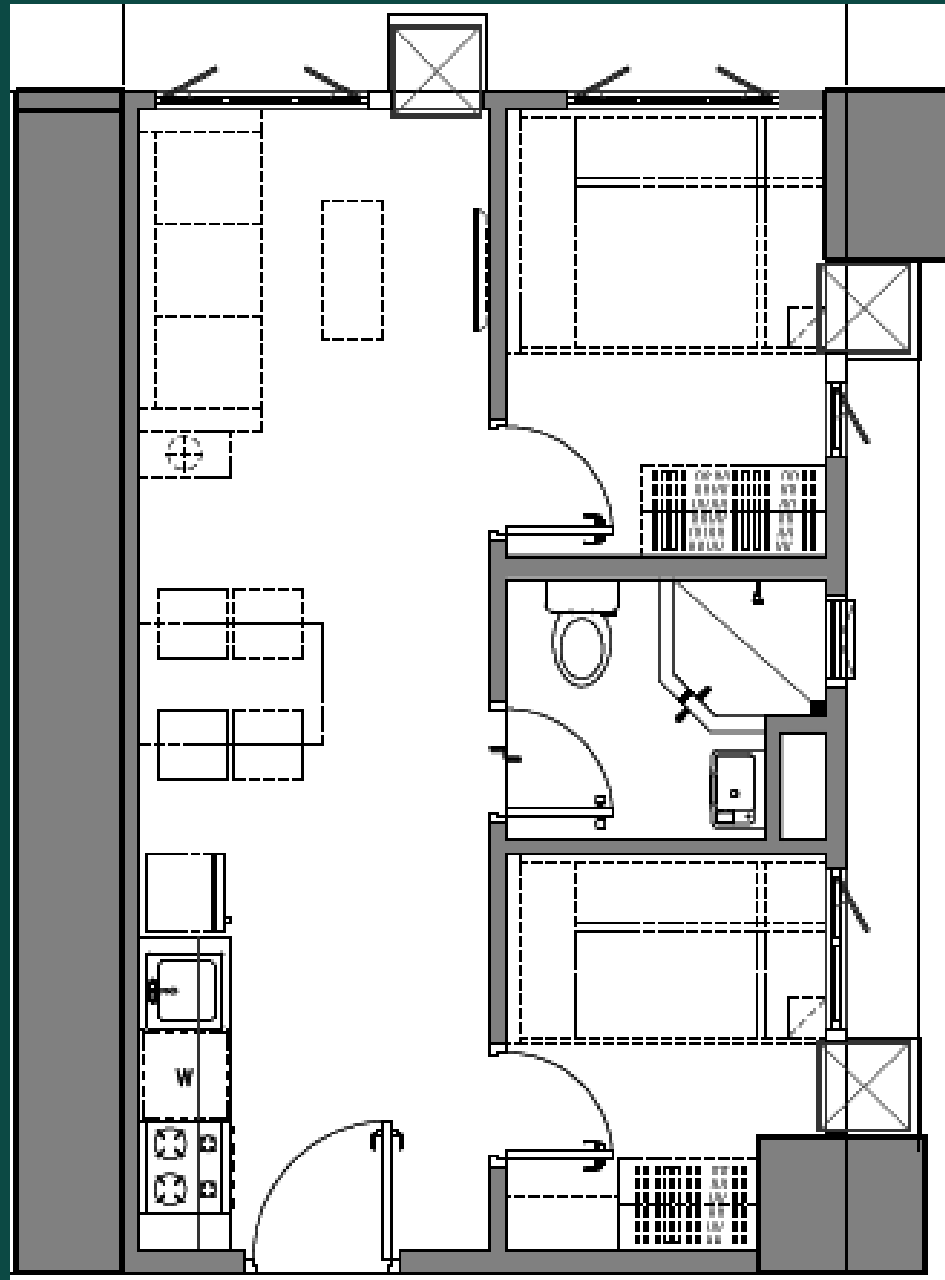
2 - Bedroom End Unit
36.62 sqm



2 - BEDROOM END DRESSED UP UNIT PERSPECTIVE

Typical Floor Plans and Unit Layouts

2 - Bedroom End Unit
36.62 sqm



2 - BEDROOM END DRESSED UP UNIT PERSPECTIVE

SMDC



JADE

RESIDENCES

Unit Specifications

Project Briefing



Unit Specifications

GENERAL FINISHES

Living and Dining Area

Floor Finishes

- Floor tiles in all areas of the unit
- Porcelain tiles

Wall finishes

- Painted plain cement finish

Ceiling Finish

- Painted Finish

Deliverables

- Digital lock-set

KITCHEN

- Painted plain cement finish on walls
- Painted drop ceiling
- 1" Stone-look Countertop
- 4" Splashboard
- Base and overhead kitchen cabinets
- Kitchen sink with faucet
- Range hood
- Cooktop
- Grease trap

BEDROOM

1 - Bedroom Units

- Wood laminated sliding door

2 - Bedroom Units

- Laminated flush door, wood laminated sliding door

Balcony

- Concrete wall
- Steel railing with powder coating

TOILET AND BATH

- Full height tiles on walls
- Tiles on floor
- Finished drop ceiling
- Water closet
- Lavatory
- Soap holder
- Tissue holder
- Shower set
- Hand-held bidet
- Provision of tapping point for water heater (shower area only)

SMDC



JADE
RESIDENCES

Pricing and Payment Terms

Project Briefing



Pricing Profile



Pricing Profile

Overall Units			
Ave. P/sqm		275,000 / sqm	
TLP		Php 5.3Mn - Php 10.3Mn	
Unit Type	Unit Area (sqm)	TLP (Mn)	TAP (inclusive of VAT and OC)
Studio Unit	20.15	5.3Mn - 5.8Mn	6.3Mn - 6.8 Mn
1 BR	24.03 - 27.32	6.2Mn - 7.6Mn	7.4Mn - 9.0Mn
1BR End Unit	26.16 - 27.32	6.7Mn - 7.6Mn	7.9Mn - 9.0Mn
1BR w Balcony	26.04	6.8Mn - 7.8Mn	8.1Mn - 9.2Mn
1BR End Unit w Balcony	27.61 - 29.61	7.5Mn - 8.6Mn	8.8Mn - 10.2Mn
2BR End Unit	36.62	10.0Mn - 10.3Mn	11.8Mn - 12.3Mn

Payment Terms



STANDARD PAYMENT TERMS

RESERVATION FEE: P 30,000

Payment Scheme	PARTICULAR	DISCOUNT
SPOT CASH	100% Cash in 30 days	15%
SPOT DP	5% Spot / 15% Over 71 months / 80% Balance	10%
SPREAD DP	5% over 12 months / 15% over 60 months / 80% Balance	5%
SPREAD DP	20% over 72 months / 80% Balance	-

Sample Computation



SAMPLE PAYMENT TERM COMPUTATION

(based from minimum and maximum TLP)

Payment Term	CASH		SPOT DP		SPREAD DP		DEFERRED	
	Minimum 100% over 1 month	Maximum 100% over 1 month	Minimum 5% over 1 month	Maximum 5% over 1 month	Minimum 5% over 12 months	Maximum 5% over 12 months	Minimum 20% over 72 months	Maximum 20% over 72 months
			15% over 71 months	15% over 71 months	15% over 60 months	15% over 60 months		
	-	-	80% BF/LP	80% BF/LP	80% BF/LP	80% BF/LP	80% BF/LP	80% BF/LP
TLP*	5,326,000	10,349,000	5,326,000	10,349,000	5,326,000	10,349,000	5,326,000	10,349,000
Discount rate	15.0%	15.0%	10.0%	10.0%	5.0%	5.0%	0.0%	0.0%
Discount	798,900	1,552,350	532,600	1,034,900	266,300	517,450	-	-
Net TLP	4,527,100	8,796,650	4,793,400	9,314,100	5,059,700	9,831,550	5,326,000	10,349,000
VAT	543,252	1,055,598	575,208	1,117,692	607,164	1,179,786	639,120	1,241,880
OC	294,262	571,782	311,571	605,417	328,881	639,051	346,190	672,685
TAP	5,364,614	10,424,030	5,680,179	11,037,209	5,995,745	11,650,387	6,311,310	12,263,565
RF	30,000	30,000	30,000	30,000	30,000	30,000	30,000	30,000
DP	5,284,614	10,344,030	254,009	521,860	22,482	46,043	-	-
MA	5,284,614	10,344,030	12,000	23,318	14,989	29,126	17,115	33,649
Bullet Payment	-	-	-	-	-	-	-	-
Balance	50,000	50,000	4,544,143	8,829,767	4,796,596	9,320,309	5,049,048	9,810,852

SMDC



JADE

RESIDENCES

Project Briefing



Artist's perspective only

SMDC



JADE
RESIDENCES

Frequently Asked Questions (FAQ)

Project Briefing



Artist's perspective only

Frequently Asked Questions



Location

- What establishments and landmarks are near SMDC Jade Residences?

MALLS/SHOPPING CENTERS AND GROCERIES

- Waltermart Makati (± 1.0km)
- Makati Cinema Square (±1.2 km)
- SM Makati / Landmark / Glorietta (±1.3km)
- Alphaland (± 500m)

EDUCATIONAL INSTITUTIONS

- Don Bosco Technical Institute (±1.0 km)
- Assumption College (±0.6 km)
- Makati Hope Christian School (±1.3 km)
- Asian Institute of Management (±1.0 km)

HEALTH INSTITUTIONS

- Makati Medical Center (±1.8 km)
- Pasay City General Hospital (±1.9 km)

PLACES OF WORSHIP

- Sto Niño de Paz Chapel (±1.2 km)
- San Ildefonso Parish Church (±1.2 km)
- National Shrine of the Sacred Heart (±2.4 km)
- St. John Bosco Parish (± 1.0km)

GOVERNMENT OFFICES

- Makati Central Police Headquarters (±2.2 km)
- Makati Fire Station (±2.1 km)
- Makati City Hall (±3.3 km)

CULTURAL INSTITUTIONS

- Finale Art File (±0.3 km)
- Ayala Museum (±1.3 km)
- Yuchengco Museum (±1.9 km)

OFFICE BUILDINGS

- PBCom Tower (±1.7 km)

2. How to go to SMDC Jade Residences (Ingress/Egress)

Main access to and from the project is via Chino Roces Avenue connected to:

- EDSA
- Don Bosco (coming from Skyway or Osmena highway)
- Arnaiz Ave.

Frequently Asked Questions



JADE

RESIDENCES

FREQUENTLY ASKED QUESTIONS

Building Details

What are the amenities in the project?

- Swimming Pool, Multi-purpose Lawns, Function Rooms, Fitness Gym, Kid's Play Area, Water Feature, Entertainment Lounge (Game Lounge, Music Lounge and Media Lounge), Wellness Spa, Meditation Deck

What is the back up power?

- Common Areas: 100% Back up power
- Residential Units:
 - 1 - Bedroom Units
 - One (1) Refrigerator Outlet
 - One (1) receptacle outlet at Living area
 - One (1) Lighting outlet at Living / Dining area
 - 2 - Bedroom Units
 - One (1) Refrigerator outlet
 - One (1) receptacle outlet at Living area
 - Two (2) Lighting outlet at Living / Dining area & Master Bedroom

Frequently Asked Questions



JADE

RESIDENCES

FREQUENTLY ASKED QUESTIONS

Building Details

What will be the type of ventilation on the typical residential hallways?

- Operable windows are provided at the end of each hallway.

What are the corridor measurements?

- Hallway width: +1.5 meters
- Hallway Floor to Ceiling Height: +2.3 meters

How many elevators are there?

- Twelve (12) elevators

When is the estimated project completion?

- March 31, 2029

What is the project's safety measure from flooding?

- 0.8m elevation from Chino Roces Avenue to Ground Floor, as per Flood Study

Frequently Asked Questions



JADE
RESIDENCES
FREQUENTLY ASKED QUESTIONS

Unit Details

What is the floor to floor and floor to ceiling height?

- Residential Floor to Ceiling Height: +2.4 to +2.9 meters
- Residential Floor to Floor Height: +3.1 meters

What are the internal partitions?

- There will be a partition for the bedroom(s) and for toilet and bath.

What is the allowable AC Capacity?

- 2 Br with full partition
 - 1.5 hp (2-split type indoor units)
 - 1.5 hp (1-window type ac unit)
- 1 Br with 2.4m height partition
 - 1.5 hp (1 indoor unit)